



Jamo[®]

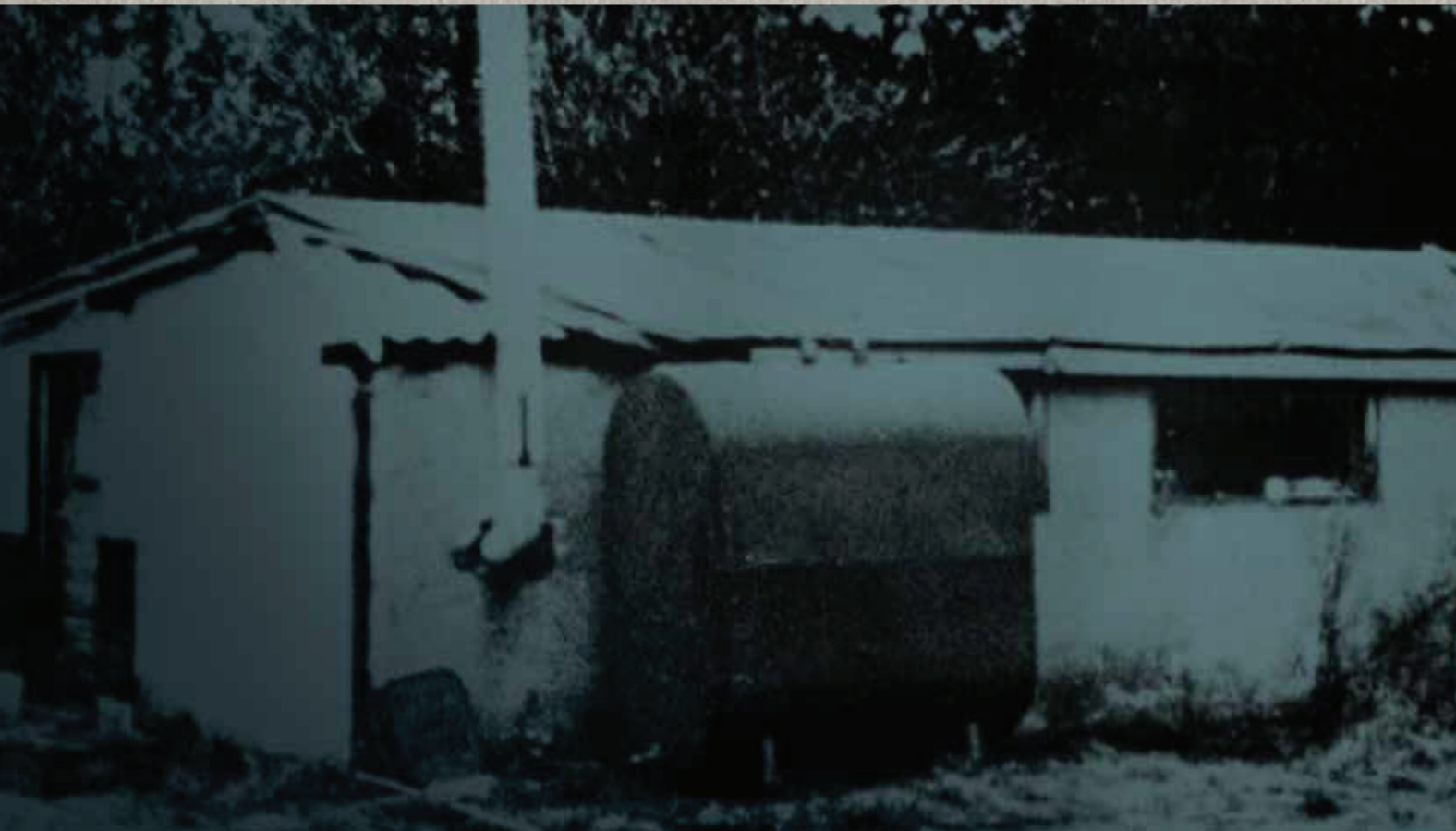
GLOBAL BUYERS GUIDE
2020/2021

1966

In the fishing village of Glyngøre, Denmark, carpenter Preben Jacobsen begins building loudspeakers in his hen house. Two years later, he will bring his brother-in-law Julius Mortensen into the business. Jacobsen + Mortensen = JAMO. By 1978, one million JAMO loudspeakers will be produced.



Has Preben i Glyngøre 12/5/4



OVER 50 YEARS
OF ADVANCED
ACOUSTIC
DESIGN



NOW

A high-tech audio collaborative utilizing resources from around the globe, JAMO crafts relevant products that look amazing, are easy to use and sound fantastic. Honoring our Scandinavian design roots, and focused on the modern minimalist lifestyle, JAMO delivers contemporary style with high-performance sound. Our innovative loudspeakers are ideal for the spaces where you live and play. From thundering home cinema, to powerful and beautifully integrated architectural solutions – JAMO is DESIGNED FOR LIFE.

Jamo



TABLE OF CONTENTS

CONCERT SERIES II

▶ C 97 II	7
▶ C 95 II	7
▶ C 93 II	8
▶ C 91 II	8
▶ C 9 SUR II	9
▶ C 9 CEN II	9

STUDIO SERIES

▶ S 809	12
▶ S 807	12
▶ S 805	12
▶ S 803	13
▶ S 801	13
▶ S 83 CEN	14
▶ S 81 CEN	14

DOLBY ATMOS

▶ S 8 ATM	17
-----------	----

STUDIO 8 ACTIVE

▶ S-801 PM	19
------------	----

SUBWOOFERS

▶ C 912 SUB	21
▶ C 910 SUB	21
▶ S 810 SUB	21
▶ S 808 SUB	22
▶ SUB 210	22
▶ WA-2 WIRELESS KIT	22

AESTHETIC SERIES

▶ A 500	23
---------	----

THX SERIES

▶ D 500 LCR	25
▶ D 500 SUR	25

BEAUTIFUL ENVIRONMENTAL INTEGRATION



JAMO CONCERT SERIES II

The aesthetic of Jamo's flagship Concert Series was envisioned by Kieron Dunk, world-renowned industrial designer. Concert series' beautiful exteriors house high performance drivers, acoustically tuned to provide open, transparent playback of movies and music. Warm, natural sound is delivered throughout the environment, enveloping the listener.

High quality cabinetry, designer finishes and advanced technologies combine to create gorgeous furniture with exceptional acoustics surpassed only by their beauty. New heather tweed grilles, magnetic attachment for the grilles, satin painted MDF baffles, cast metal feet with brushed finish and a smaller and sleeker logo in chrome metal look make the Concert series aesthetically elegant, while providing exceptional performance.



C 97 II
TOWER
LOUDSPEAKER

Jamo®

CONCERT SERIES

C 9 SERIES II



C 97 II

PLACEMENT	FRONT
SYSTEM	3-Way Bass Reflex
WOOFER	2 x 152.4 mm / 6" HCCC Cone
TWEETER	25 mm / 1" Silk Dome with WaveGuide
POWER	180 W (360 W peak)
SENSITIVITY	89 dB
FREQUENCY RANGE	32 Hz - 24 kHz
IMPEDANCE	6 ohms
WEIGHT	25.8 kg / 56.88 lb
DIMENSIONS	1 072 mm (42.2") H x 215 mm (8.5") W x 342 mm (13.5") D
FINISH	Black Ash, Matte white

Part Number:
1066709
(Black)
1068693
(Matte White)



C 95 II

PLACEMENT	FRONT
SYSTEM	2-Way Bass Reflex
WOOFER	2 x 152.4 mm / 6" HCCC Cone
TWEETER	25 mm / 1" Silk Dome with WaveGuide
POWER	165 W (330 W peak)
SENSITIVITY	89 dB
FREQUENCY RANGE	37 Hz - 24 kHz
IMPEDANCE	6 ohms
WEIGHT	20 kg / 44 lb
DIMENSIONS	982 mm (38.7") H x 215 mm (8.5") W x 317 mm (12.5") D
FINISH	Black Ash, Matte white

Part Number:
1066712
(Black)
1068694
(Matte White)

CONCERT SERIES

C 9 SERIES II

C 93 II



PLACEMENT	FRONT/SURROUND
SYSTEM	2-Way Bass Reflex
WOOFER	2 x 152.4 mm / 6" HCCC Cone
TWEETER	25 mm/ 1" Silk Dome with WaveGuide
POWER	120 W (240 W peak)
SENSITIVITY	88 dB
FREQUENCY RANGE	45 Hz - 24 kHz
IMPEDANCE	6 ohms
WEIGHT	6.4 kg / 14 lb
DIMENSIONS	350 mm (13.8") H x 200 mm (7.9") W x 259 mm (10.2") D
FINISH	Black Ash, Matte white

Part Number:
1066715
(Black)
1068695
(Matte White)

C 91 II



PLACEMENT	FRONT/SURROUND
SYSTEM	2-Way Bass Reflex
WOOFER	101.6 mm/ 4" HCCC Cone
TWEETER	25 mm/ 1" Silk Dome with WaveGuide
POWER	100 W (200 W peak)
SENSITIVITY	86 dB
FREQUENCY RANGE	65 Hz - 24kHz
IMPEDANCE	6 ohms
WEIGHT	4.1 kg / 9 lb
DIMENSIONS	265 mm (10.4") H x 175 mm (6.9") W x 191 mm (7.5") D
FINISH	Black Ash, Matte white

Part Number:
1066718
(Black)
1068696
(Matte White)

CONCERT SERIES

C 9 SERIES II

C 9 SUR II



PLACEMENT	SURROUND
SYSTEM	3-Way Sealed
WOOFER	101.6 mm/ 4" HCCC Cone
MID RANGE DRIVERS	95.3 mm / 3,75" HCCC Cone
TWEETER	25 mm/ 1" Silk Dome with WaveGuide
POWER	120 W (240 W peak)
SENSITIVITY	87 dB
FREQUENCY RANGE	80 Hz - 24 kHz
IMPEDANCE	6 ohms
WEIGHT	8.2 kg / 18 lb
DIMENSIONS	350 mm (13.8") H x 318.5 mm (12.5") W x 196 mm (7.7") D
FINISH	Black Ash, Matte white

Part Number:
1066724
(Black)
1068698
(Matte White)

C 9 CEN II



PLACEMENT	CENTER
SYSTEM	2-Way Bass Reflex
WOOFER	2 x 101.6 mm/ 4" HCCC Cone
TWEETER	25 mm/ 1" Silk Dome with WaveGuide
POWER	140 W (280 W peak)
SENSITIVITY	88 dB
FREQUENCY RANGE	55 Hz - 24 kHz
IMPEDANCE	6 ohms
WEIGHT	6.8 kg / 15 lb
DIMENSIONS	179 mm (7") H x 460 mm (18.1") W x 219.5 mm (8.6") D
FINISH	Black Ash, Matte white

Part Number:
1066721
(Black)
1068697
(Matte White)



S 803
MONITOR SPEAKERS

JAMO STUDIO 8 SERIES

The Jamo Studio 8 series has been imagined to live seamlessly in modern, premium environments. Contemporary material and finish choices, such as wood grain accents, matte polymer veneers and magnetic woven linen grilles accentuate the clean, minimalist lines of this European design. The compact cabinet designs are an ideal solution for urban living environments around the world.



STUDIO8 SERIES

Building on classic Jamo Studio acoustics, the Studio 8 line represents an amazing value for the price - bringing high design and high performance to any budget. An exclusive electrical contact system allows easy integration of Dolby Atmos® elevation modules without the use of additional speaker wires, for a truly minimalist aesthetic.

DOLBY ATMOS®

Jamo Studio 8 Atmos-ready models contain metal contact points on top of each speaker (Towers and Monitors).

Conductive metal feet come pre-installed in the base of the ATM Topper.

The metal feet align with contact points on the speaker. The conductive connection between the Topper and the speaker means the back face of the Topper can be kept free of any inputs.



DOLBY ATMOS®

GRILLE

Magnetic attachment to cabinet. MDF frame wrapped in linen acoustic material. The fabric sports a large woven pattern, creating a heavy texture with areas of light and dark material mixed throughout.



Jamo Studio 8 speaker cabinets and Atmos Toppers contain magnets with multiple attachment points, allowing the grille to slide up and aesthetically present the two units as one complete tower.





S 809

PLACEMENT	FRONT
FREQUENCY RANGE	37 Hz - 26 kHz
SENSITIVITY	90 dB (2.83 V @ 1m)
POWER	120 W (240 W peak)
IMPEDANCE	8 ohms
HIGH FREQ DRIVER	25 mm (1") Soft Dome Tweeter
LOW FREQ DRIVER	3 x 127mm (5") Polyfiber Woofers
CROSSOVER	2 kHz
MATERIALS	MDF
ENCLOSURE TYPE	Bass Reflex via Front Firing Slot Port
INPUTS	Single Binding Posts (Main / Height)
DIMENSIONS	1 042 mm (41.02") H x 191 mm (7.52") W x 252 mm (10.25") D
WEIGHT	13.6 kg / 30 lbs
FINISH	Black, Walnut, White

Part Number:
1064325 (Black)
1064371 (White)
1064578 (Walnut)



S 807

PLACEMENT	FRONT
FREQUENCY RANGE	42 Hz - 26 kHz
SENSITIVITY	90 dB (2.83 V @ 1m)
POWER	100 W (200 W peak)
IMPEDANCE	8 ohms
HIGH FREQ DRIVER	25 mm (1") Soft Dome Tweeter
LOW FREQ DRIVER	2 x 127 mm (5") Polyfiber Woofers
CROSSOVER	2 kHz
MATERIALS	MDF
ENCLOSURE TYPE	Bass Reflex via Front Firing Slot Port
INPUTS	Single Binding Posts (Main / Height)
DIMENSIONS	915 mm (36.02") H x 191 mm (7.52") W x 252 mm (9.92") D
WEIGHT	11.8 kg / 26 lbs
FINISH	Black, Walnut, White

Part Number:
1064326 (Black)
1064372 (White)
1064580 (Walnut)



S 805

PLACEMENT	FRONT
FREQUENCY RANGE	49 Hz - 26 kHz
SENSITIVITY	88 dB (2.83 V @ 1m)
POWER	80 W (160 W peak)
IMPEDANCE	8 ohms
HIGH FREQ DRIVER	25 mm (1") Soft Dome Tweeter
LOW FREQ DRIVER	127 mm (5") Polyfiber Woofers
CROSSOVER	2 kHz
MATERIALS	MDF
ENCLOSURE TYPE	Bass Reflex via Front Firing Slot Port
INPUTS	Single Binding Posts
DIMENSIONS	787 mm (30.98") H x 191 mm (7.52") W x 252 mm (9.92") D
WEIGHT	8.6 kg / 19 lbs
FINISH	Black, Walnut, White

Part Number:
1064327 (Black)
1064373 (White)
1064581 (Walnut)



S 803

PLACEMENT	FRONT / SURROUND
FREQUENCY RANGE	57 Hz - 26 kHz
SENSITIVITY	87 dB (2.83 V @ 1m)
POWER	80 W (160 W peak)
IMPEDANCE	8 ohms
HIGH FREQ DRIVER	25 mm (1") Soft Dome Tweeter
LOW FREQ DRIVER	127 mm (5") Polyfiber Woofers
CROSSOVER	2 kHz
MATERIALS	MDF
ENCLOSURE TYPE	Bass Reflex via Front Firing Slot Port
INPUTS	Single Binding Posts (Main / Height)
DIMENSIONS	353 mm (13.9") H x 191 mm (7.52") W x 252 mm (9.92") D
WEIGHT	5.4 kg / 12 lbs
FINISH	Black, Walnut, White

Part Number:
1064328 (Black)
1064374 (White)
1064582 (Walnut)



S 801

PLACEMENT	FRONT / SURROUND
FREQUENCY RANGE	76 Hz - 26 kHz
SENSITIVITY	85 dB (2.83 V @ 1m)
POWER	60 W (120 W peak)
IMPEDANCE	8 ohms
HIGH FREQ DRIVER	25 mm (1") Soft Dome Tweeter
LOW FREQ DRIVER	102 mm (4") Polyfiber Woofers
CROSSOVER	2 kHz
MATERIALS	MDF
ENCLOSURE TYPE	Bass Reflex via Front Firing Slot Port
INPUTS	Single Binding Posts
DIMENSIONS	285 mm (11.22") H x 156 mm (6.14") W x 163 mm (6.42") D
WEIGHT	2.7 kg / 6 lbs
FINISH	Black, Walnut, White

Part Number:
1064329 (Black)
1064375 (White)
1064583 (Walnut)



S 83 CEN

PLACEMENT	CENTER
FREQUENCY RANGE	65 Hz - 26 kHz
SENSITIVITY	87 dB (2.83 V @ 1m)
POWER	80 W (160 W peak)
IMPEDANCE	8 ohms
HIGH FREQ DRIVER	25 mm (1") Soft Dome Tweeter
LOW FREQ DRIVER	2 x 127 mm (5") Polyfiber Woofers
CROSSOVER	2 kHz
MATERIALS	MDF
ENCLOSURE TYPE	Bass Reflex via Rear Firing Slot Port
INPUTS	Single Binding Posts
DIMENSIONS	215 mm (8.46") H x 498 mm (19.61") W x 245 mm (9.65") D
WEIGHT	6.8 kg / 15 lbs
FINISH	Black, Walnut, White

Part Number:
1064330 (Black)
1064377 (White)
1064584 (Walnut)

S 81 CEN

PLACEMENT	CENTER
FREQUENCY RANGE	71 Hz - 26 kHz
SENSITIVITY	86 dB (2.83 V @ 1m)
POWER	60 W (120 W peak)
IMPEDANCE	8 ohms
HIGH FREQ DRIVER	25 mm (1") Soft Dome Tweeter
LOW FREQ DRIVER	2 x 102 mm (4") Polyfiber Woofers
CROSSOVER	2 kHz
MATERIALS	MDF
ENCLOSURE TYPE	Bass Reflex via Rear Firing Slot Port
INPUTS	Single Binding Posts
DIMENSIONS	184 mm (7.25") H x 435 mm (17.13") W x 220 mm (8.66") D
WEIGHT	5 kg / 11 lbs
FINISH	Black, Walnut, White

Part Number:
1064331 (Black)
1064376 (White)
1064585 (Walnut)



S 809 HCS

- 2 x S 809
- 2 x S 801
- 1 x S 81 CEN



S 807 HCS

- 2 x S 807
- 2 x S 801
- 1 x S 81 CEN



S 805 HCS

- 2 x S 805
- 2 x S 801
- 1 x S 81 CEN



S 803 HCS

- 2 x S 803
- 2 x S 801
- 1 x S 81 CEN



TOTAL IMMERSION

DOLBY ATMOS



DOLBY ATMOS®

S 8 ATM



PLACEMENT	TOP OF FLOOR OR BOOKSHELF SPEAKER
FREQUENCY RANGE	CONFORMS TO DOLBY ATMOS® SPECIFICATION
SENSITIVITY	CONFORMS TO DOLBY ATMOS® SPECIFICATION
POWER	50 W (100 W peak)
IMPEDANCE	8 ohms
DRIVER	102 mm (4") Polyfiber Woofer
MATERIALS	MDF
ENCLOSURE TYPE	Sealed
INPUTS	Integrated Conductive Feet (For use with S 809, S 807, or S 803 models only)
DIMENSIONS	180 mm (7.1") H x 191 mm (7.52") W x 242 mm (9.53") D
WEIGHT	2.3 kg / 5 lbs
FINISH	Black, Walnut, White

Part Number:
1064332 (Black)
1064378 (White)
1064586 (Walnut)



S 8 ATM
DOLBY® ATMOS®
ELEVATION SPEAKER

S 8 ATM ATMOS® ELEVATION SPEAKER

Recreate the incredible cinematic experience of Dolby® Atmos® with the S 8 ATM Dolby® Atmos® Certified Elevation speaker, which reflects Dolby® Atmos® height effects off the ceiling down to the listener, to create a truly stunning, 3-dimensional surround sound experience.

Elegant metal fasteners atop the S 809, S 807, and S 803 models provide a chic, modern industrial look, but also serve as a connection point for the S 8 ATM Dolby® Atmos® elevation speaker.

This patent-pending design allows for all of the wire connections on the back of the floorstander, avoiding unsightly and messy speaker wire going all the way up to the Atmos® module - for cinematic, completely immersive Dolby® Atmos® sound while preserving the beautiful aesthetic of the Jamo Studio 8 Series.

Jamo®

SMALL CABINET BIG SOUND



STUDIO 8 ACTIVE



S 801 PM

PLACEMENT	POWERED SPEAKER
WOOFER (MM/IN)	102 mm / 4" Polyfiber Woofer
TWEETER (MM/IN)	25 mm / 1 Soft Dome Tweeter
CROSSOVER	2 kHz (Passive)
POWER	60 W Total System Power (120 W Peak) 24 W per channel cont. @ $\leq 1\%$ THD
SENSITIVITY	85 dB
FREQUENCY RANGE	76 Hz - 26 kHz
IMPEDANCE	8 ohms
INPUTS	Bluetooth wireless technology/RCA Line analog/USB digital/Optical digital
OUTPUTS	Subwoofer
ENCLOSURE MATERIAL	MDF
ENCLOSURE TYPE	Bass Reflex via Rear Firing Slot Port
WEIGHT	5.9 lbs (Passive) / 6.5 lbs (Active)
DIMENSIONS	285 mm (11.22") H x 156 mm (6.14) W x 163 mm (6.42") D
ACCESSORIES	Remote control/Power Supply(1.5M Region specific) Speaker Wire(4M) / USB Type A to Type B cable (4M) 2xAA batteries
FINISH	Black, White

Part Number:

1067899 (Black)

1067901 (White)



S-801PM
POWERED SPEAKERS

S-801PM POWERED SPEAKERS

The S-801 PM are specifically designed to provide exceptional output and balanced, full sound in any application despite the small stature.

These powered monitors have organic lines - fully magnetic grilles with no mounting holes or push pin to provide a clean, minimalistic front baffle design, while the large woven linen grille cloth creates visual interest with heavy texture.

Expand the sound of your S 801 PM powered monitors by simply adding a subwoofer. Jamo offers several best-in-class options to take your listening experience to the next level.

Jamo®



FEEL YOUR
MUSIC AND
MOVIES

JAMO SUBWOOFERS

Don't just hear your movies, experience them with the robust, earth-shaking bass of Jamo high-performance subwoofers. These low-frequency subs fill rooms with deeper acoustics and at the same time - look incredible in your space. Utilizing modern designs and acoustic technologies, Jamo subwoofers demonstrate the difference a real subwoofer can make to your sound experience.

The Jamo Subwoofer line-up is comprised of more than just highly versatile, quality products; each member of the range is tuned with a dynamic, balanced sound that can be combined with an existing Jamo sound system or any other quality audio system. Jamo subwoofers are specially designed to broaden your experience of low frequencies, from explosions and earthquakes to subtle musical nuances and dynamic peaks.



S 810 SUB
SUBWOOFER

Jamo®

SUBWOOFERS



C 912 SUB

PLACEMENT	SUBWOOFER
WOOFER	10" Long-Throw IMG
AMPLIFIER TYPE	Class D with Analog Preamp Stage
AMPLIFIER POWER	400 W
SENSITIVITY	114 dB
FREQUENCY RANGE	29 Hz - 125 Hz
ENCLOSURE MATERIAL	MDF
ENCLOSURE TYPE	Bass Reflex via Front-Firing Tube Port
WEIGHT	18,94 kg / 41.75 lbs
DIMENSIONS	454 mm (17.89") H x 356 mm (13.99") W x 480 mm (18.88") D
FINISH	Black Ash, Matte White

Part Number:
1068189
(Black)
1068190
(White)



C 910 SUB

PLACEMENT	SUBWOOFER
WOOFER	10" Long-Throw IMG
AMPLIFIER TYPE	Class D with Analog Preamp Stage
AMPLIFIER POWER	300 W
SENSITIVITY	110 dB
FREQUENCY RANGE	32 Hz - 125 Hz
ENCLOSURE MATERIAL	MDF
ENCLOSURE TYPE	Bass Reflex via Front-Firing Tube Port
INPUTS	Dual RCA/LFE Line In, WA-2 Wireless Port
WEIGHT	14.06 kg / 31 lbs
DIMENSIONS	400 mm (15.76") H x 318 mm (12.5") W x 408 mm (16.1") D
FINISH	Black Ash, Matte White

Part Number:
1068181
(Black)
1068182
(Matte White)



S 810 SUB

PLACEMENT	SUBWOOFER
FREQUENCY RANGE	36 Hz - 180 Hz
AMPLIFIER TYPE	Class D
AMPLIFIER POWER	75 W (150 W peak)
DRIVERS	25.4 mm (10") Polyfiber Woofer
MAXIMUM OUTPUT	110 dB
MATERIALS	MDF
ENCLOSURE TYPE	Bass Reflex via slot port
INPUTS	RCA Line-In/LFE
WEIGHT	11.8 kg / 26 lbs
DIMENSIONS	507 mm (19.9") H x 404 mm (15.9") W x 226 mm (8.9") D
FINISH	Black, Walnut, White

Part Number:
1064607 (Black)
1064610 (White)
1064613 (Walnut)

SUBWOOFERS

S 808 SUB



PLACEMENT	SUBWOOFER
FREQUENCY RANGE	39 Hz - 180 Hz
AMPLIFIER TYPE	Class D
AMPLIFIER POWER	50 W (100 W peak)
DRIVERS	20.3 mm (8") Polyfiber Woofer
MAXIMUM OUTPUT	108 dB
MATERIALS	MDF
ENCLOSURE TYPE	Bass Reflex via slot port
INPUTS	RCA Line-In/LFE
WEIGHT	8.6 kg / 19 lbs
DIMENSIONS	457 mm (18") H x 354 mm (13.9") W x 176 mm (6.9") D
FINISH	Black, Walnut, White

Part Number:
1064598 (Black)
1064601 (White)
1064604 (Walnut)

SUB 210



PLACEMENT	SUBWOOFER
SYSTEM	Bass Reflex
WOOFER	230 mm / 8"
RATED OUTPUT	200 W
FREQUENCY RANGE	38 Hz - 200 kHz
IMPEDANCE	22 ohms
WEIGHT	7.5 kg / 16.5 lbs
DIMENSIONS	313 mm (12.3") H x 283 mm (11.1") W x 305 mm (12") D
FINISH	Black Ash

Part Number:
89500 (Black 230V)
89504 (HG Black 230V)
89505 (HG White 230V)
89501 (Wenge 230V)
89522 (Dark Apple 230V)

WA-2 WIRELESS SUBWOOFER KIT



FREQ OF OPERATION	2.4 GHz ISM band
CHANNEL SELECTION	Automatic
SIGNAL RANGE	50 feet (15 m)
FREQUENCY RANGE	15 -150 Hz +/-3 dB

Part Number:
1013170



BALANCED
FOR THE EYE
AND THE EAR



JAMO AESTHETIC SERIES

The A 500 has an amazing sound presence—and its subtle elegance makes it ideal for virtually any interior design. The simple square design matches contemporary furniture or flat panel televisions. And their three-inch depth makes them an unobtrusive addition to living areas or commercial space.

A 500

PLACEMENT	FRONT/CENTER/SURROUND
SYSTEM	2-Way Bass Reflex
WOOFER	102 mm / 4"
TWEETER	51 mm / 2 cones
POWER	50 W (60 W peak)
SENSITIVITY	90 dB @ 2.8 V/1m
FREQUENCY RANGE	80 Hz - 20 kHz
IMPEDANCE	8 ohms
WEIGHT	1.6 kg / 3.5 lb
DIMENSIONS	250 mm (9.8") H x 285 mm (11.2") W x 76 mm (3") D
FINISH	White

Part Number:
82437 (White)



ENJOY CINEMA
SOUND AT HOME

D-500 THX



The size of the Jamo D 500 THX home theater system allows direct placement in most medium-sized living rooms. In addition to the compact dimensions, these speakers are styled in a way that accommodates many contemporary decorations and furniture combinations.

Finished in high-gloss lacquer with carefully engineered drive units, the D 500 series adds a musical-instrument-touch to the modern home, delivering impeccable reproduction of even the most demanding movie-sound-track.

THX SERIES



D 500 LCR

SYSTEM	3-WAY CLOSED
WOOFER	2 x 140 mm / 5½"
TWEETER	1 x 25 mm / 1"
MIDRANGE	2 x 76 mm / 3"n
CROSSOVER FREQUENCY	400 / 2.5 kHz
FREQUENCY RANGE	80 - 20 kHz
POWER	150 W (cont) / 200 W (peak)
SENSITIVITY	89 dB
IMPEDANCE	4 ohms
WEIGHT	7,2 kg / 15.8 lbs
DIMENSIONS	260 mm (10.2") H x 450 mm (17.7") W x 130 mm (5.1") D
FINISH	High gloss black or White

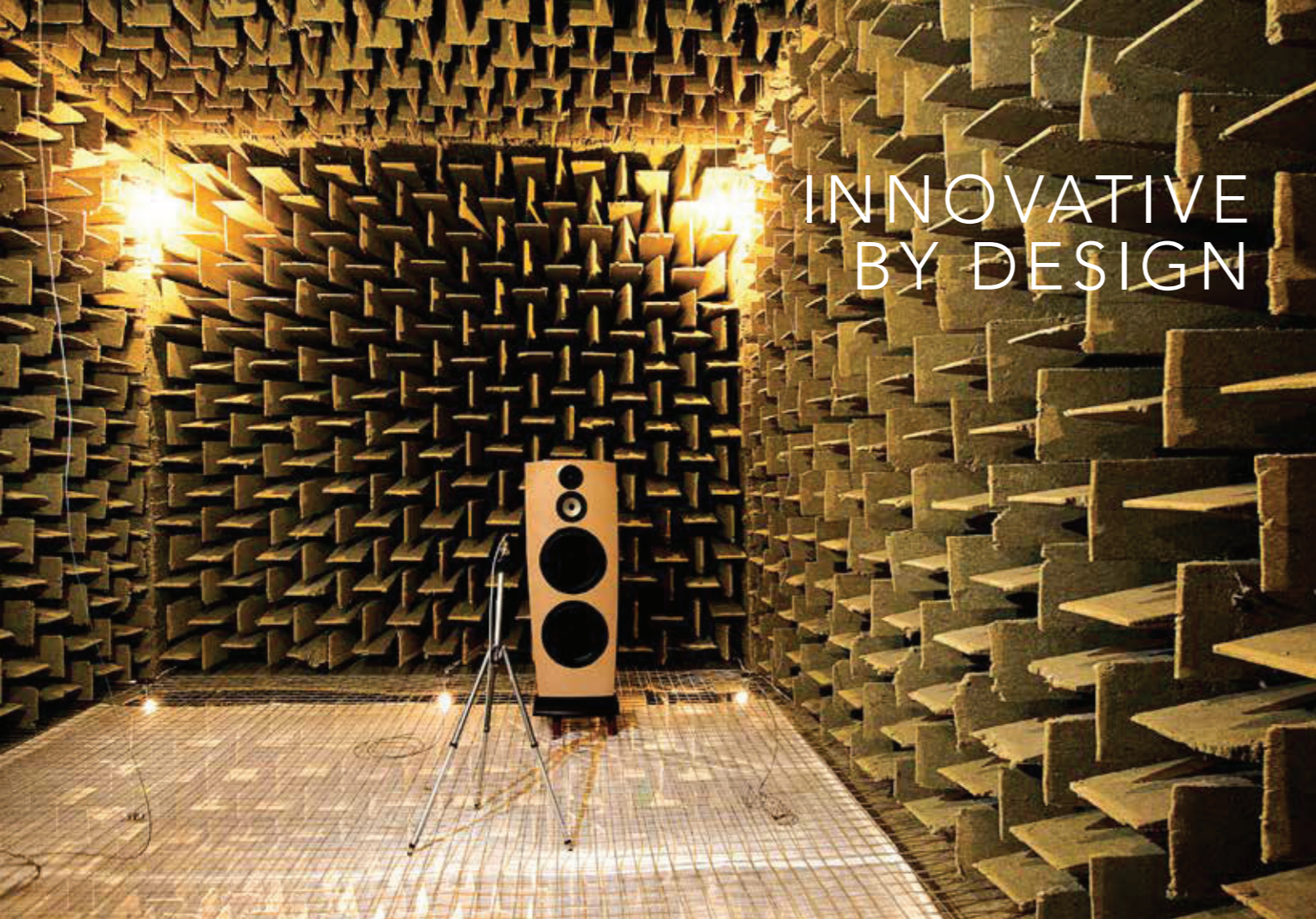
Part Number:
89400 (Black)
89402 (White)



D 500 SUR

SYSTEM	3-WAY CLOSED DIPOLE
WOOFER	1 x 140 mm / 5½"
TWEETER	2 x 25 mm / 1"
MIDRANGE	2 x 76 mm / 3"
CROSSOVER FREQUENCY	250 / 2.5 kHz
FREQUENCY RANGE	80 - 20 kHz
POWER	120 W (cont) / 170 W (peak)
SENSITIVITY	84 dB
IMPEDANCE	8 ohms
WEIGHT	6,7 kg / 14.8 lbs
DIMENSIONS (HXWXD)	260 mm (10.2") H x 450 mm (17.7") W x 130 mm (5.1") D
FINISH	High gloss black or White

Part Number:
89401 (Black)
89403 (White)



INNOVATIVE
BY DESIGN



DRIVEN BY
A VISION

JAMO FOUNDERS JULIUS MORTENSEN AND PREBEN JACOBSEN



THE LEGENDARY JAMO R 909

THE PURSUIT OF PERFECTION

For over half a century JAMO has designed and engineered its products utilizing some of the most talented, skilled and passionate people in the industry – starting with Preben Jacobsen, in a hen house in Glyngøre, Denmark. Today, advanced acoustics research and development continues with some of the most brilliant minds in consumer electronics and some of the most well-designed products in the industry. We continue to innovate, honoring the principals and ideals of Preben Jacobsen and Julius Mortensen, providing high-performance sound to the places where we live, integrating beautifully into our environments.



STUDIO 8 SERIES

PRO SYSTEM DESIGN

Acoustically transform any room into the ultimate Jamo experience! We offer free ProDesign services to all of our integration partners. Once your designs and requirements are submitted to our team of sound engineers, they will create a system that turns your space into a fully immersive, high-performance movie theater. To get started, email plans to ProSystemDesign@jamo.com.

©2017 KLIPSCH GROUP, INC. ALL RIGHTS RESERVED. JAMO IS A TRADEMARK OF KLIPSCH GROUP, INC., REGISTERED IN THE US AND OTHER COUNTRIES. KLIPSCH GROUP, INC. IS A WHOLLY-OWNED SUBSIDIARY OF VOXX INTERNATIONAL CORPORATION.

VISIT JAMO.COM

FOLLOW US



Jamo®

The background of the entire image is a close-up, high-resolution photograph of a wooden surface. The wood grain is prominent, showing various patterns of lines and knots. The color is a warm, natural wood tone, ranging from light tan to a darker brown. The lighting is even, highlighting the texture of the wood.

Jamo[®]
EST. 1968