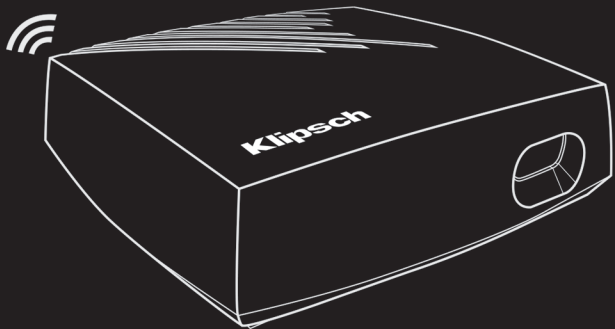


Klipsch®

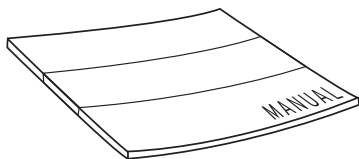
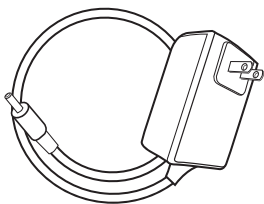
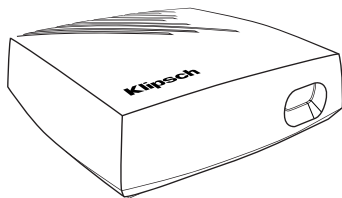


WA-3 WIRELESS SUBWOOFER KIT

OWNER'S MANUAL

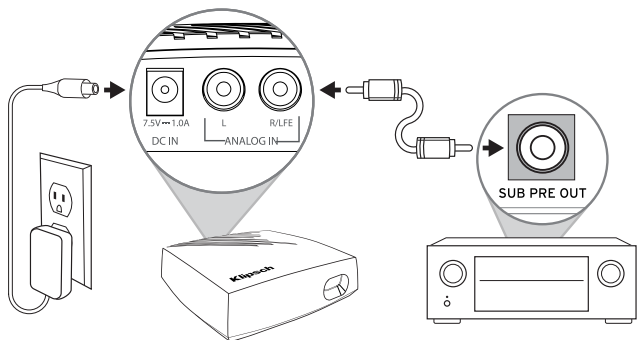
CONTENTS

CONTENTS CONTENU CONTENIDO INHALT CONTIENE CONTEÚDO 内容

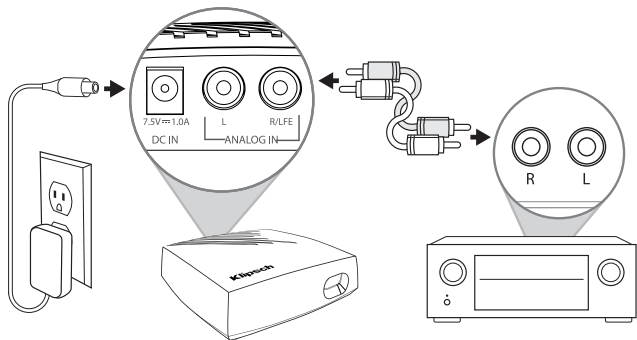


CONNECTIONS

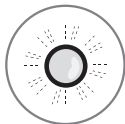
CONNEXIONS CONEXIONES ANSCHLÜSSE CONNESSION CONEXÕES 连接



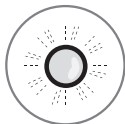
OR 0 Ou Oder 0 Ou 要么



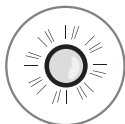
LEDS



LED Blinks Slowly	Subwoofer Not Paired
DEL cliquant lentement	Caissons d'extrêmes graves non appariés
El indicador LED parpadea lentamente	Subwoofer no vinculado
LED blink langsam	Verbindung des Subwoofers gescheitert
Il LED lampeggia lentamente	Il subwoofer non è associato
LED piscando lentamente	Subwoofer não pareado
发光二极管缓慢闪烁	低音炮未配对



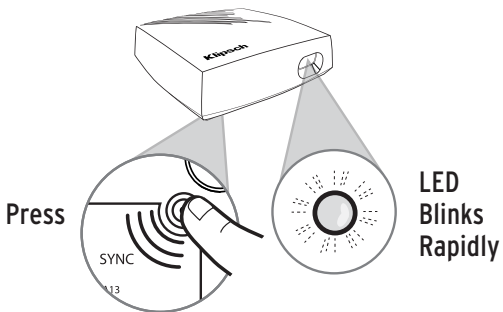
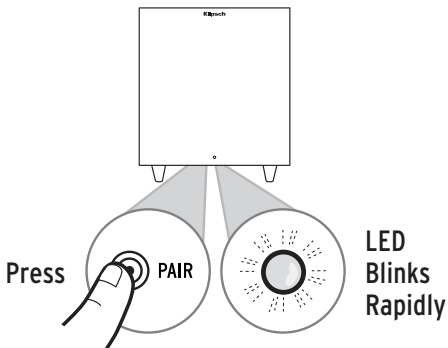
LED Blinks Rapidly	Subwoofer in Pairing Mode
DEL cliquant rapidement	Caissons d'extrêmes graves en mode d'appariement
El indicador LED parpadea rápidamente	Subwoofer en modalidad de vinculación
LED blink schnell	Subwoofer im Verbindungsmodus
Il LED lampeggia rapidamente	Il subwoofer è in modalità di associazione
LED piscando rapidamente	Subwoofer no modo de pareamento
发光二极管快速闪烁	低音炮在配对模式



LED Solid	Subwoofer Paired
DEL allumée en permanence	Caissons d'extrêmes graves appariés
Indicador LED fijo	Subwoofer vinculado
LED leuchtet dauerhaft	Subwoofer verbunden
Il LED è acceso a luce fissa	Il subwoofer è associato
LED aceso	Subwoofer pareado
发光二极管常亮	低音炮已配对

PAIR

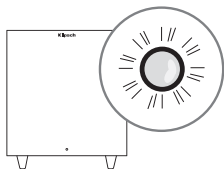
CONNEXION CONEXIÓN VERBINDEN COLLEGAMENTO CONECTAR 连接



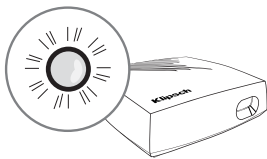
PRESS Appuyez Oprima Drücken Premere Pressionar 按下

PAIR

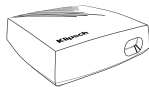
CONNEXION CONEXIÓN VERBINDEN COLLEGAMENTO CONECTAR 连接



LED Solid
Sub Connected



CONNECT UP TO THREE SUBWOOFERS



CONNEXION JUSQU'À TROIS CAISSONS D'EXTRÊMES GRAVES

CONECTE HASTA TRES SUBWOOFERS

BIS ZU DREI SUBWOOFER ANSCHLIESSEN


COLLEGARE FINO A TRE SUBWOOFER


CONECTE ATÉ TRÊS SUBWOOFERS

连接最多三个低音炮

IMPORTANT SAFETY INSTRUCTIONS!

1. READ these instructions.
2. KEEP these instructions.
3. HEED all warnings.
4. FOLLOW all instructions.
5. DO NOT use this apparatus near water.
6. CLEAN Only with dry cloth.
7. DO NOT block any ventilation openings. Install in accordance with the manufacturer's instructions.
8. DO NOT install near any heat sources such as radiators, heat registers, stoves, or other apparatus (including amplifiers) that produce heat.
9. DO NOT defeat the safety purpose of the polarized or grounding type plug. A polarized plug has two blades with one wider than the other. A grounding type plug has two blades and a third grounding prong. The wider blade or the third prong are provided for your safety. If the provided plug does not fit into your outlet, consult an electrician for replacement of the obsolete outlet.
10. PROTECT the power cord from being walked on or pinched, particularly at plugs, convenience receptacles, and the point where they exit from the apparatus.
11. ONLY USE attachments/accessories specified by the manufacturer.
12. USE only with a cart, stand, tripod, bracket, or table specified by the manufacturer, or sold with the apparatus. When a cart is used, use caution when moving the cart/apparatus combination to avoid injury from tip-over.
13. UNPLUG this apparatus during lightning storms or when unused for long periods of time.
14. REFER all servicing to qualified service personnel. Servicing is required when the apparatus has been damaged in any way, such as power-supply cord or plug is damaged, liquid has been spilled or objects have fallen into the apparatus, the apparatus has been exposed to rain or moisture, does not operate normally, or has been dropped.
15. DO NOT expose this apparatus to dripping or splashing and ensure that no objects filled with liquids, such as vases, are placed on the apparatus.
16. To completely disconnect this apparatus from the AC Mains, disconnect the power supply cord plug from the AC receptacle.
17. The mains plug of the power supply cord shall remain readily operable.

 The exclamation point, within an equilateral triangle, is intended to alert the user to the presence of important operating and maintenance (servicing) instructions in the literature accompanying the product.

 The lightning flash with arrowhead symbol within an equilateral triangle, is intended to alert the user to the presence of uninsulated "dangerous voltage" within the product's enclosure that may be of sufficient magnitude to constitute a risk of electrical shock to persons.

WARNING: To reduce the risk of fire or electrical shock, do not expose this apparatus to rain or moisture.

WARNING: No naked flame sources – such as candles – should be placed on the product.

Place the equipment near a main power supply outlet and make sure that you can easily access the power breaker switch.



WARNING: This product is intended to be operated ONLY from the AC Voltages listed on the back panel or included power supply of the product. Operation from other voltages other than those indicated may cause irreversible damage to the product and void the products warranty. The use of AC Plug Adapters is cautioned because it can allow the product to be plugged into voltages in which the product was not designed to operate. If the product is equipped with a detachable power cord, use only the type provided with your product

or by your local distributor and/or retailer. If you are unsure of the correct operational voltage, please contact your local distributor and/or retailer.

FCC AND CANADA EMC COMPLIANCE INFORMATION

NOTE: This equipment has been tested and found to comply with the limits for a Class B digital device, pursuant to part 15 of the FCC Rules. These limits are designed to provide reasonable protection against harmful interference in a residential installation. This equipment generates, uses and can radiate radio frequency energy and, if not in-stalled and used in accordance with the instructions, may cause harmful interference to radio communications. However, there is no guarantee that interference will not occur in a particular installation. If this equipment does cause harmful interference to radio or television reception, which can be determined by turning the equipment off and on, the user is encouraged to try to correct the interference by one or more of the following measures:

- Reorient or relocate the receiving antenna.
- Increase the separation between the equipment and receiver.
- Connect the equipment into an outlet on a circuit different from that which the receiver is connected.
- Consult the dealer or an experienced radio/TV technician for help.

Approved under the verification provision of FCC Part 15 as a Class B Digital Device. Caution: Changes or modifications not expressly approved by the manufacturer could void the user's authority to operate this device. This Class B digital apparatus complies with Canadian ICES-003. Cet appareil numérique de la classe B est conforme à la norme NMB-003 du Canada.

EU COMPLIANCE INFORMATION

Eligible to bear the CE mark, Conforms to European Union Low Voltage Directive 2006/95/EC; Conforms to European Union EMC Directive 2004/108/EC.

WEEE NOTICE



Note: This mark applies only to countries within the European Union (EU) and Norway.

This appliance is labeled in accordance with European Directive 2002/96/EC concerning waste electrical and electronic equipment (WEEE). This label indicates that this product should not be disposed of with household waste. It should be deposited at an appropriate facility to enable recovery and recycling.

WIRELESS TRANSMITTER COMPLIANCE INFORMATION

The term "IC:" before the radio certification number only signifies that Industry Canada technical specifications were met. This equipment complies with FCC and IC radiation exposure limits set forth for an uncontrolled environment. This equipment should be installed and operated with minimum distance 20cm between the radiator and your body. This transmitter must not be co-located or operating in conjunction with any other antenna or transmitter.

The term «IC:» avant le numéro de certification radio signifie seulement que les spécifications techniques d'Industrie Canada ont été respectées.

Cet appareil est conforme à FCC et IC l'exposition aux rayonnements limites fixées pour un environnement non contrôlé. Cet appareil doit être installé et utilisé avec une distance minimale de 20 cm entre le radiateur et votre corps. Cet transmetteur ne doit pas être co-situé ou opérant en liaison avec toute autre antenne ou transmetteur.

This device has been designed to operate with the antennas listed below, and having a maximum gain of [x] dB. Antennas not included in this list or having a gain greater than [x] dB are strictly prohibited for use with this device. The required antenna impedance is 50 ohms.

Operation is subject to the following two conditions: (1) this device may not cause interference, and (2) this device must accept any interference, including interference that may cause undesired operation of the device. To reduce potential radio interference to other users, the antenna type and its gain should be so chosen that the equivalent isotropically radiated power (e.i.r.p.) is not more than that permitted for successful communication.

Klipsch®

KEEPERS OF THE SOUND™

3502 WOODVIEW TRACE, INDIANAPOLIS, IN, USA

KLIPSCH.COM

©2018 Klipsch Group, Inc. Klipsch Group, Inc. is a wholly-owned subsidiary of Vox International Corporation. Klipsch and Keepers of the Sound are trademarks of Klipsch Group, Inc., registered in the United States and other countries. The *Bluetooth*™ word mark is a registered trademark owned by Bluetooth SIG, Inc. and any use of such mark by Klipsch Group, Inc. is under license. DTS and Play-Fi are registered trademarks of DTS, Inc. For DTS patents, see <http://patents.dts.com>. Manufactured under license from DTS, Inc. DTS, Play-Fi, the Symbol and Play-Fi together in combination with the Symbol are trademarks of DTS, Inc. DTS and Play-Fi are registered trademarks of DTS, Inc. ©DTS, Inc. All Rights Reserved. SPOTIFY is a registered trademark of Spotify AB. Google Play is a trademark of Google Inc. Apple and the Apple logo are trademarks of Apple Inc., registered in the U.S. and other countries. App Store is a service mark of Apple Inc. All other trademarks are the property of their respective owners.



VI - 020818