



R SERIES



KEF
INNOVATORS IN SOUND

A man in a grey t-shirt is shown from the waist up, looking upwards with his head tilted back. He is standing in the rain, with numerous raindrops visible around him. The background is dark, and the rain is illuminated, creating a dramatic and atmospheric scene.

LIVE IT

Some music you hear. The all-new R Series delivers a sound so pure you live each and every moment.

Stunningly fluent Uni-Q driver arrays combine with potent bass drivers to deliver a rich, spacious sound image of startling accuracy that approaches the extraordinary quality of KEF's renowned Reference Series.

Music or movies, the R Series presents a new dimension in audiophile standards of entertainment, making flawless precision and superb dynamics more accessible than ever.

Live it. Feel it.

DNA

The R Series has a pedigree of rare distinction, combining innovations from the critically lauded KEF Blade, the world's first single apparent source speaker.



PURE

Amazingly fast and clean mid-range response. Startlingly pure high frequencies. All operating as a single perfectly integrated voice to deliver sweet, accurate sounds of unprecedented clarity.

The new Uni-Q driver array is nothing short of a masterpiece.

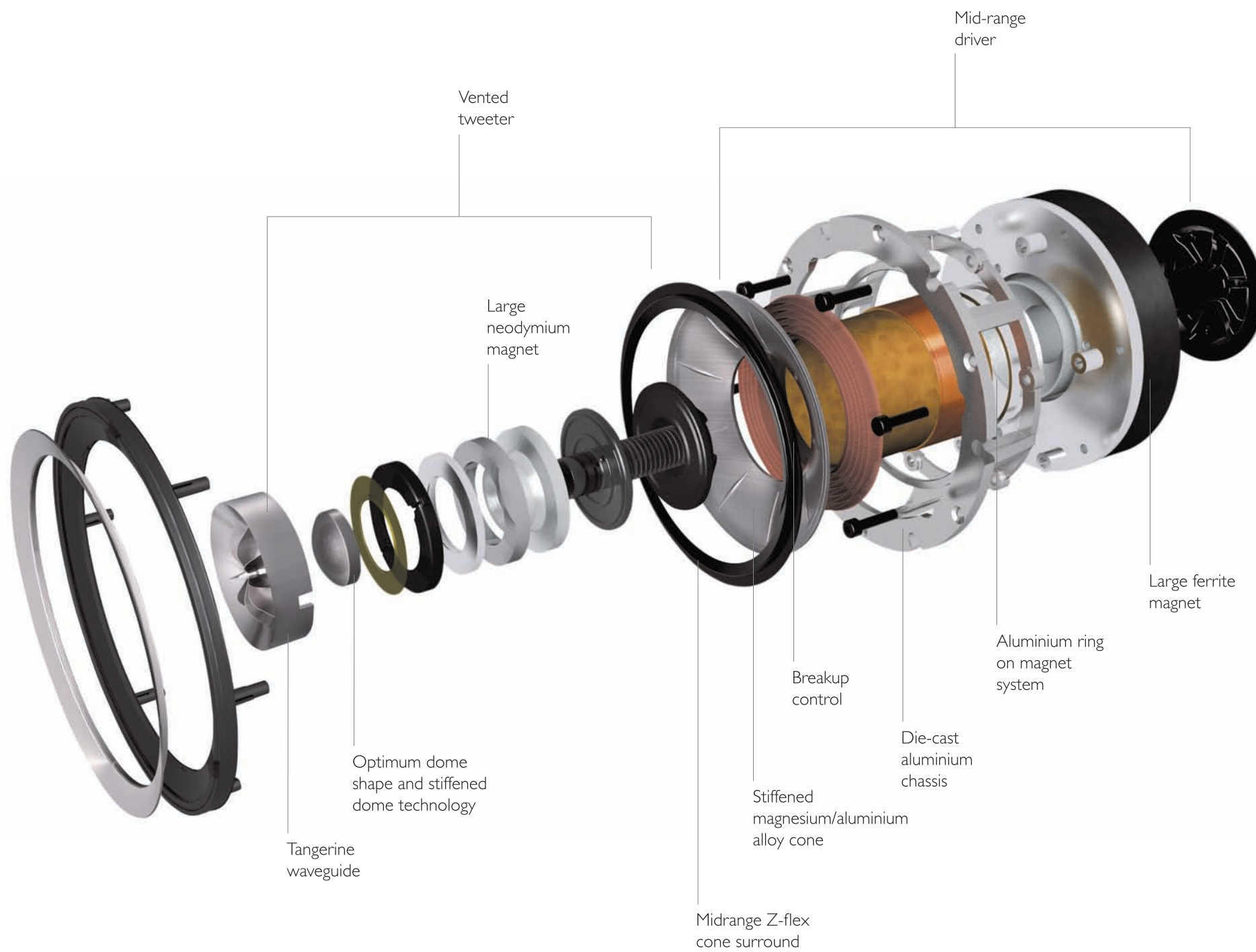
Unlike conventional speakers, the mid-range cones are rigid magnesium/aluminum constructions that reduce breakup problems. The new mid-range Z-flex surround smoothes the tweeter transition to the front baffle, which results in undistorted high frequencies.

Large voice coils increase power handling and dynamics, reducing distortion and delivering exceptional vocal clarity.

Venting the tweeters reduces pressure behind the dome, increasing midrange bandwidth and lowering distortion. Upper registers are articulated with flawless precision. KEF's tangerine waveguide helps disperse higher frequencies evenly across a wider angle to flood the room with a sophisticated, refreshingly natural sound field.



UNI-Q® DRIVER ARRAY



POWER

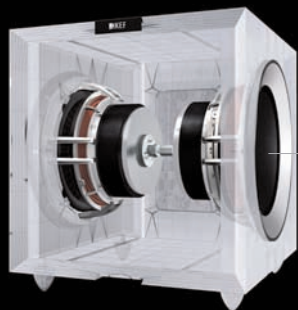
Dynamic, uncompressed and undistorted bass of heart pounding clarity envelops you, striking deep emotional chords. Your soul will awaken. And the earth will move.

Bass driver

Massive, vented magnet assemblies and large aluminum voice coils drive the lightweight yet stiff, strong hybrid cones. Bass output is faster, cleaner and more accurate. Satin anodised elements contribute to the unit's elegance, while the diameter of the trim ring accentuates a visual sophistication that belies the speaker's awesome power.

Subwoofer

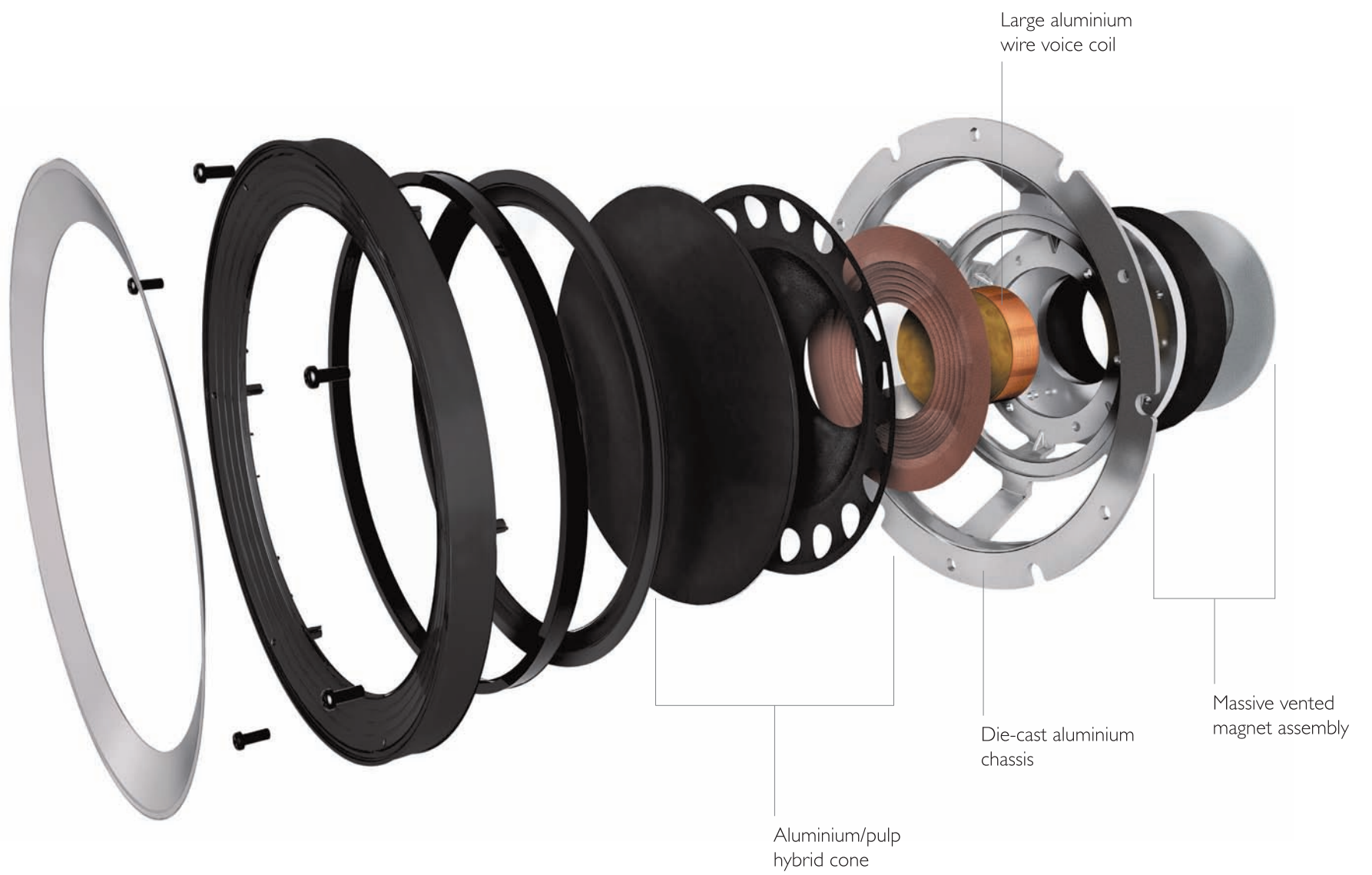
Force cancelling drivers avoid cabinet agitation. Opposing reactive forces are nullified by rigidly mounting the low frequency drivers back-to-back.



Force cancelling
bass drivers



BASS DRIVER

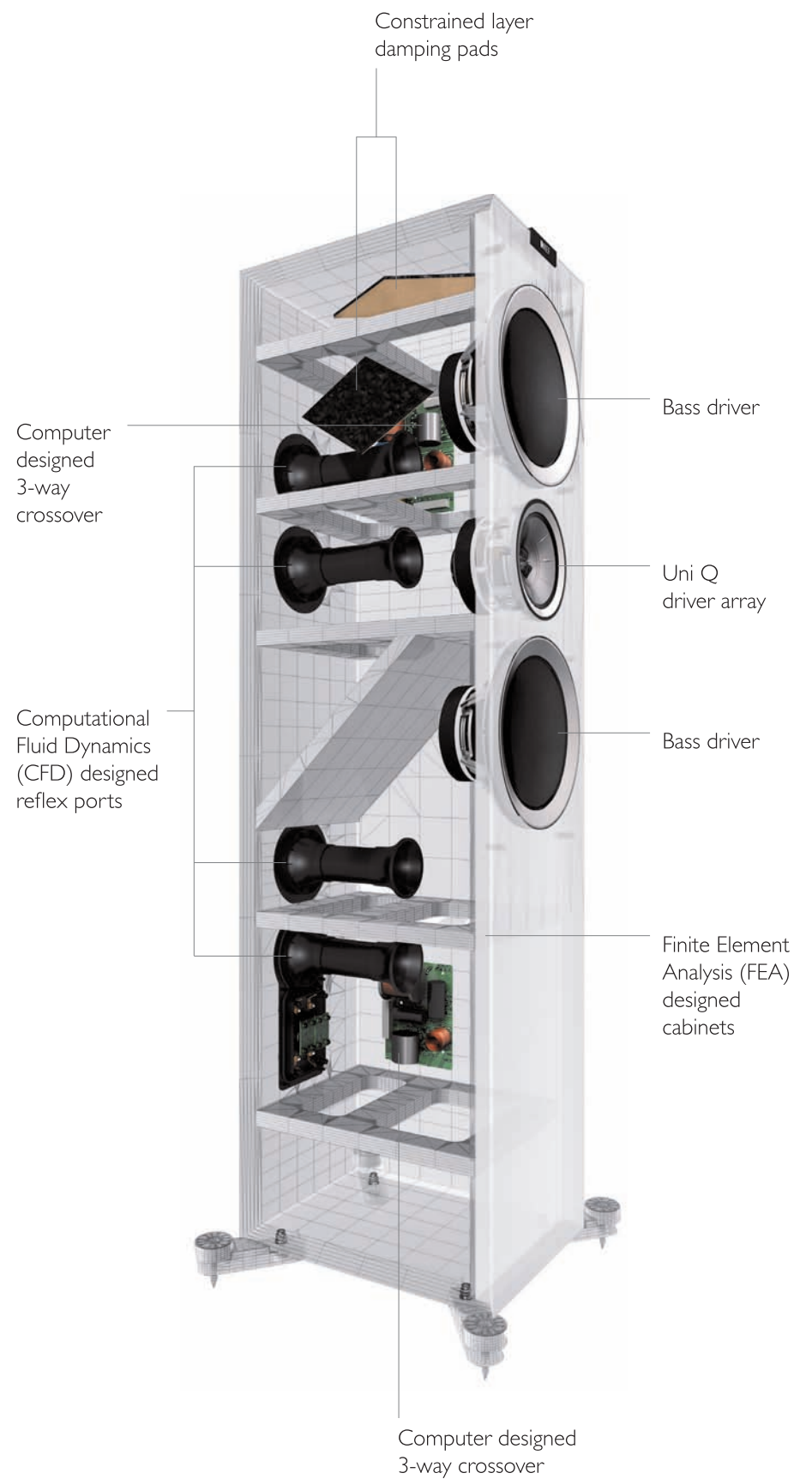


PRECISION

Designed from the ground up, the R series is a towering leap forward that creates a new dimension in sonic authenticity.

The geometry and bracing of the enclosure optimises vibrational behavior, reducing secondary radiation from cabinet walls for a cleaner sound. Damping panels further minimize cabinet resonance and colouration.

Front baffles are clean with no visible screws. Grilles are fixed magnetically. Available in real Walnut and Rosewood veneers, or highly polished Piano Black, the R Series complements the home as much as it respects the music.





SURROUNDED

Music or home theatre, now you can immerse yourself in true surround sound. Centre speakers, dipole speakers and an extremely powerful subwoofer combine to place you at the heart of audiophile excellence.



SIMPLICITY

A little finesse goes a long way to delivering a big impact. Every aspect of the R Series has been considered in the creation of a superb audio experience.

Adjustable die cast aluminum feet support steel spikes, with integrated locking knobs for easy height adjustment. Nickel plated bi-wire connectors with terminal linking control allow all standard connection methods and provide easy, reliable connection.

The geometry of the reflex ports has been tuned to minimize turbulence at high levels, reducing port noise and low frequency compression.

ACCESSIBLE

The R Series presents the high-end technologies of KEF Blade in a timeless, elegant format. Serious audiophiles can now enjoy phenomenally accurate reproduction that neither adds nor subtracts from the original recording. Indulge in a near-Reference experience at a price that will also be music to your ears.

Refined, spacious and exquisitely detailed, you won't just hear music the way it was intended it to be... you'll live it, feel it and love it.



R FAMILY



R SPECIFICATIONS



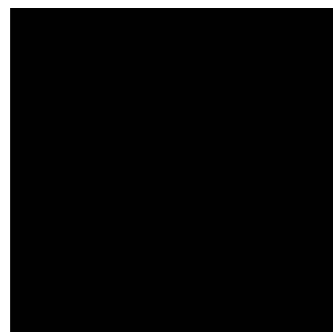
Model	R100	R300	R500
Design	Two-way bass reflex	Three-way bass reflex	Three-way bass reflex
Drive units	Uni-Q driver array: HF: 25mm (1in.) vented aluminium dome MF: 130mm (5.25in.) aluminium	Uni-Q driver array: HF: 25mm (1in.) vented aluminium dome MF: 125mm (5in.) aluminium Bass units: LF: 165mm (6.5in.) aluminium	Uni-Q driver array: HF: 25mm (1in.) vented aluminium dome MF: 125mm (5in.) aluminium Bass units: LF: 2 x 130mm (5.25in.) aluminium
Frequency range (-6dB)	49Hz - 45kHz	42Hz - 45kHz	39Hz - 45kHz
Frequency response (±3dB)	56Hz - 28kHz	50Hz - 28kHz	46Hz - 28kHz
Crossover frequency	2.5kHz	500Hz, 2.8kHz	500Hz, 2.8kHz
Amplifier requirements	25 - 100 W	25 - 120 W	25 - 150 W
Sensitivity (2.83V/1m)	86dB	88dB	88dB
Harmonic distortion 2nd & 3rd harmonics (90dB, 1m)	<0.4% 150Hz-20kHz	<0.4% 130Hz-20kHz	<0.4% 120Hz-20kHz
Maximum output	107dB	110dB	111dB
Nominal impedance	8Ω (min. 3.2Ω)	8Ω (min. 3.2Ω)	8Ω (min. 3.2Ω)
Weight	6.6kg (14.5lbs.)	12kg (26.4lbs.)	21.8kg (48lbs.)
Dimension (H x W x D) (with grille and terminal)	280 x 180 x 289 mm (11 x 7.1 x 11.4 in.)	385 x 210 x 345 mm (15.2 x 8.3 x 13.6 in.)	1015 x 180 x 305 mm (40 x 7.1 x 12 in.)
Dimension (H x W x D) (with grille, terminal & plinth)	N/A	N/A	1066 x 299 x 328 mm (42 x 11.8 x 12.9 in.)



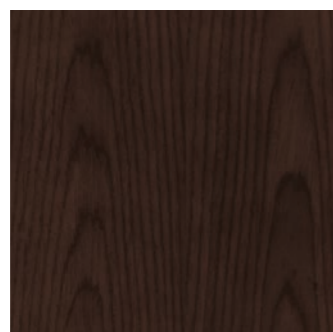
Model	R700	R900	R200c
Design	Three-way bass reflex	Three-way bass reflex	Three-way bass reflex
Drive units	Uni-Q driver array: HF: 25mm (1in.) vented aluminium dome MF: 125mm (5in.) aluminium Bass units: LF: 2 x 165mm (6.5in.) aluminium	Uni-Q driver array: HF: 25mm (1in.) vented aluminium dome MF: 125mm (5in.) aluminium Bass units: LF: 2 x 200mm (8in.) aluminium	Uni-Q driver array: HF: 25mm (1in.) vented aluminium dome MF: 125mm (5in.) aluminium Bass units: LF: 2 x 130mm (5.25in.) aluminium
Frequency range (-6dB)	37Hz - 45kHz	35Hz - 45kHz	52Hz - 45kHz
Frequency response (±3dB)	42Hz - 28kHz	40Hz - 28kHz	65Hz - 28kHz
Crossover frequency	500Hz, 2.9kHz	400Hz, 2.9kHz	500Hz, 2.8kHz
Amplifier requirements	25 - 200 W	25 - 250 W	25 - 150 W
Sensitivity (2.83V/1m)	89dB	90dB	87dB
Harmonic distortion 2nd & 3rd harmonics (90dB, 1m)	<0.4% 100Hz-20kHz	<0.4% 80Hz-20kHz	<0.4% 120Hz-20kHz
Maximum output	113dB	115dB	111dB
Nominal impedance	8Ω (min. 3.2Ω)	8Ω (min. 3.7Ω)	8Ω (min. 3.2Ω)
Weight	25.9kg (57lbs.)	29.5kg (65lbs.)	14.4kg (31.7lbs.)
Dimension (H x W x D) (with grille and terminal)	1070 x 210 x 345 mm (42.1 x 8.3 x 13.6 in.)	1130 x 240 x 365 mm (44.5 x 9.4 x 14.4 in.)	170 x 530 x 305 mm (6.7 x 20.9 x 12 in.)
Dimension (H x W x D) (with grille, terminal & plinth)	1121 x 329 x 368 mm (44.1 x 13.0 x 14.5 in.)	1181 x 359 x 388 mm (46.5 x 14.1 x 15.3 in.)	N/A



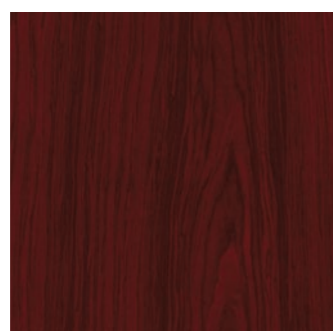
Model	R600c	R800ds	R400b
Design	Three-way bass reflex	Three-way dipole	Powered Subwoofer (Sealed)
Drive units	Uni-Q driver array: HF: 25mm (1in.) vented aluminium dome MF: 125mm (5in.) aluminium Bass units: LF: 2 x 165mm (6.5in.) aluminium	Uni-Q driver array: HF: 2 x 25mm (1in.) vented aluminium dome MF: 2 x 130mm (5.25in.) aluminium	Bass units: LF: 2 x 225mm (9in.)
Frequency range (-6dB)	50Hz - 45kHz	90Hz - 45kHz	26Hz - 140Hz
Frequency response (±3dB)	60Hz - 28kHz	100Hz - 28kHz	N/A
Crossover frequency	500Hz, 2.9kHz	300Hz, 2.5kHz	N/A
Amplifier requirements	25 - 200 W	25 - 100 W	N/A
Sensitivity (2.83V/1m)	89dB	85dB	N/A
Harmonic distortion 2nd & 3rd harmonics (90dB, 1m)	<0.4% 100Hz-20kHz	<0.4% 150Hz-20kHz	N/A
Maximum output	113dB	107dB	111dB
Nominal impedance	8Ω (min. 3.2Ω)	8Ω (min. 3.2Ω)	N/A
Amplifier	N/A	N/A	2 x 250W (500W) built-in Class-D
Low pass filter	Variable	N/A	40Hz - 140Hz, 4th-order
Low level signal inputs	N/A	N/A	RCA phono sockets
Internal volume	N/A	N/A	22 litres
Power requirements	N/A	N/A	100V - 120V / 220V - 240V ~ 50 / 60Hz
Power consumption	N/A	N/A	600VA
Weight	17.2kg (37.9lbs.)	7.4kg (16.3lbs.)	21.5kg (47.4lbs.)
Dimension (H x W x D) (with grille and terminal)	200 x 630 x 335 mm (7.9 x 24.8 x 13.2 in.)	180 x 350 x 184 mm (7.1 x 13.8 x 7.2 in.)	N/A
Dimension (H x W x D) (with grille, terminal & plinth)	N/A	N/A	365 x 330 x 351 mm (14.4 x 13 x 13.8 in.)



Piano Black



Walnut



Rosewood

LEGACY

Innovation is what sets KEF apart. It's why we were founded, and why we've always attracted some of the world's most gifted acoustic engineers. No other manufacturer can match KEF's long list of breakthroughs.

50 Years of Innovation

We pioneered the use of synthetic materials for diaphragms and driver surrounds to maintain consistent sound quality across the frequency range.

KEF was the first to use computers in loudspeaker testing and design. This unrivalled capability still underpins our technological supremacy, and allows us to match pairs of speakers to within half of a decibel. Models like the 104A/B and 105 achieved worldwide acclaim upon release. KEF's latest flagship Blade is synonymous with acoustic excellence.

It's an unrivalled legacy that continues to inform everything we do today. Innovation, after all, is an ongoing quest, not a destination. And KEF still leads the way.

THE INNOVATORS IN SOUND



HOW WILL IT MOVE YOU?



United Kingdom
GP Acoustics (UK) Limited
Eccleston Road, Tovil, Maidstone
Kent, ME15 6QP U.K.
Tel: +44 (0) 1622 672261
Fax: +44 (0) 1622 750653
Email: info@kef.com

China
GP Acoustics (China) Limited
Unit 4910, Diwang Commercial Centre
Shenzhen, China 518008
Tel: +86 (755) 8246 0746
Fax: +86 (755) 8246 0125
Email: info.prc@gpe-hkg.com

Europe (EMEA)
GP Acoustics GmbH
Am Brambusch 22, 44536, Lünen
Deutschland
Tel: +49 (0) 231 9860-320
Fax: +49 (0) 231 9860-330
Email: sales@gpaeu.com

France
GP Acoustics (France) SAS
39 Rue des Granges Galand - BP60414
37554 Saint Avertin CEDEX, France
Tel: +33 (0) 2 47 80 49 01
Fax: +33 (0) 2 47 27 89 64
Email: info.france@kef.com

Hong Kong
GP Acoustics (HK) Limited
6F, Gold Peak Building, 30 Kwai Wing Road,
Kwai Chung, N.T., Hong Kong
Tel: +852 2410 8188
Fax: +852 2401 0754
Email: info@gpacoustics.com.hk

Japan
KEF Japan, 1-11-17, Honcho, Koganei-city
Tokyo, Japan. 184-0004
Tel: +81 (0) 42-388-2030
Email: info@kef.jp

Taiwan
GP Acoustics (Taiwan) Limited
Room 4B, 5F, 415, Xingyi Road Sec 4
Taipei 110, Taiwan
Tel: +886 (2) 2723 0868
Fax: +886 (2) 2723 0818
Email: info@gpacoustics.com.tw

USA
GP Acoustics (US) Inc.
10 Timber Lane, Marlboro,
New Jersey 07746 U.S.A.
Tel: +1 (732) 683 2356
Fax: +1 (732) 683 2358
Email: sales@kefamerica.com

KEF and Uni-Q are registered trademarks. Uni-Q and other KEF technologies are protected by worldwide patents. All text and image copyrights reserved. KEF reserves the right, in line with continuing research and development, to amend or change specifications. E&OE.

