

Cabasse



Stereo HiFi



Home Theatre



Wireless HiFi Systems



Custom Install





Stereo, Home-Theatre, Wireless HiFi Systems, Custom Install

These four dimensions of audio resonate in high fidelity throughout the Cabasse product range thanks to a knowledge and passion rooted in music and innovation.

Founded by Georges Cabasse, heir of five generations of stringed instruments craftsmen and with a unique memory for sounds, Cabasse has, since 1950, one obsession: the authentic reproduction of music to bring you the true emotion of a concert in your home.

The Cabasse team's multiple skills and spirit of innovation allow them to develop innovative acoustic and electronic technologies which benefit all our models, from the world reference La Sphere to the petite Stream 1.

Traditional, design, custom install, or connected, choose your solution. Let your music be your guide. Welcome to the Cabasse Universe.



LA SPHÈRE / L'OCÉAN

LA SPHÈRE SYSTEM

4-Way Concentric QC-55 Driver and 96 kHz Active Processor

Dimensions H x W x D:
140 x 70 x 70 cm / 55.1 x 27.6 x 27.6"
Frequency response: 20-25,000 Hz
Weight: 100 kg / 220 lbs

Amplifier set for La Sphère

4 x Cabasse BCREP1000
+ 4 x Cabasse BC Ref 500

Pearl Black Pearl

World reference, the flagship « La Sphère » is a genuine masterpiece. Power and precision of the 55cm (22") woofer, purity of the 4-way co-axial source point, depth and stability of the sound stage, perfect linearity of the phase in a 60° cone, 4-way active filter with a new 96kHz processor, anechoic chamber calibration and tailor-made set-up in your home. All the Cabasse technologies are set in motion for full and integrated musical emotion.



L'OCÉAN SYSTEM

Active Speaker System w/4-Way Co-Axial Unit

Dimensions H x W x D:
128 x 51 x 61 cm / 50.4 x 20 x 24"
Weight: 120 kg / 263 lbs

Glossy Black Pearl Black Pearl

L'Océan, La Sphère's "little sister" is a combination of purity, sophistication and simplicity. The purity of the design and the sound is immediately enthralling. The technical sophistication of the 4-way co-axial driver, the built-in electronics and the pre-amplifier-processor is breathtaking. The simplicity in use and the authenticity of the acoustic reproduction renew the true pleasure of music every day.





PACIFIC 3 SA

Floorstanding Semi-Active 3-Way Speaker

Dimensions H x W x D:
129 x 29 x 49 cm / 50.8 x 11.4 x 19.3"
Frequency Response:
38-20,000 Hz – 150 W – 92 db*

- Glossy Black
- Glossy White



PACIFIC 3

Floorstanding 3-Way Speaker

Dimensions H x W x D:
131 x 29 x 59 cm / 51.6 x 11.4 x 23.2"
Frequency Response:
41-20,000 Hz – 150 W – 87 db*

- Glossy Black
- Glossy Mahogany
- Glossy Wild Cherry

ALTURA MC



IROISE 3

Floorstanding 3-Way Main Speaker

Dimensions H x W x D:
116 x 32 x 42 cm /
45.7 x 12.6 x 16.5"
Frequency Response:
50-24,000 Hz – 150 W – 93 db*

- Glossy Black
- Glossy Mahogany
- Glossy Wild Cherry



EGEA 3

Floorstanding 3-Way Main Speaker

Dimensions H x W x D:
111 x 29 x 41 cm /
43.7 x 11.4 x 16.2"
Frequency Response:
55-24,000 Hz – 110 W – 90 db*

- Glossy Black
- Glossy Mahogany
- Glossy Wild Cherry



AMBROSE 3

3-Way Main/Center/Surround Speaker

Dimensions H x W x D:
80 x 19 x 21 cm / 31.5 x 7.5 x 8.3"
Frequency Response:
75-24,000 Hz – 110 W – 91 db*

- Glossy Black



BORA

Bookshelf 3-Way Main/Surround Speaker

Dimensions H x W x D:
50 x 27 x 38.5 cm /
19.7 x 10.6 x 15"
Frequency Response:
52-24,000 Hz – 120 W – 90 db*

- Glossy Black

MC 40 NW



JAVA

Floorstanding 3-Way Main Speaker

Dimensions H x W x D:
110 x 25 x 35 cm / 43.3 x 9.8 x 13.8"
Frequency Response:
59-23,000 Hz – 110 W – 90 db*

- Glossy Black
- Glossy White
- Black Oak
- Red Cherry

CABRERA

3-Way Center Speaker

Dimensions H x W x D:
18 x 49 x 35 cm / 7.1 x 19.3 x 13.8"
Frequency Response:
70-23,000 Hz – 90 W – 89.5 db*

- Glossy Black
- Glossy White
- Black Oak
- Red Cherry



MINORCA

Bookshelf 3-Way Main / Surround Speaker

Dimensions H x W x D:
40 x 23 x 28 cm / 15.8 x 9.1 x 11"
Frequency Response:
69-23,000 Hz – 75 W – 89 db*

- Glossy Black
- Glossy White
- Black Oak
- Red Cherry

MT 31



JERSEY

Floorstanding 2-Way Main Speaker

Dimensions H x W x D:
100 x 22 x 32 cm / 39 x 8.2 x 12.7"
Frequency Response:
58-23,000 Hz – 100 W – 90 db*

- Glossy Black
- Glossy White

ANTIGUA

Bookshelf 2-Way Main / Surround Speaker

Dimensions H x W x D:
41 x 22 x 32 cm / 16.1 x 8.7 x 11.5"
Frequency Response:
59-23,000 Hz – 75 W – 89 db*



- Glossy Black
- Glossy White

MT 32



JERSEY

Floorstanding 2-Way Main Speaker

Dimensions H x W x D:
100 x 22 x 32 cm /
39 x 8.2 x 12.7"
Frequency Response:
55-23,000 Hz – 100 W – 89 db*

- Ebony
- Walnut

ANTIGUA

Bookshelf 2-Way - Main / Surround Speaker

Dimensions H x W x D:
41 x 22 x 30 cm / 16.1 x 8.7 x 11.8"
Frequency Response:
57-23,000 Hz – 75 W – 88 db*

- Ebony
- Walnut



SOCO A

Center 2-Way Speaker

Dimensions H x W x D: 16 x 47 x 37 cm / 6.3 x 18.5 x 14.6"
Frequency Response:
64-23,000 Hz – 85 W – 88 db*

- Glossy Black
- Glossy White



SOCO A

Center 2-Way Speaker

Dimensions H x W x D: 16 x 47 x 37 cm /
6.3 x 18.5 x 14.6"
Frequency Response:
64-23,000 Hz – 85 W – 88 db*

- Ebony
- Walnut

ORION

Floorstanding Subwoofer

Dimensions H x W x D:
42 x 30 x 43 cm /
16.5 x 11.8 x 16.9"
Frequency Response:
28-200 Hz – Actif – 200 W

- Ebony
- Walnut



*1 W / 1 m

HOME THEATRE



BALTIC EV ON STAND

3-Way Satellite Speaker on Stand

Dimensions H x W x D: 132 x 32 x 42 cm / 53 x 12.6 x 16.5"
Frequency Response: 80-25,000 Hz – 220 W – 90 db*
Weight: 19 kg / 42 lbs

- + Wild Cherry + Black Pearl
- + Santos + Black Pearl
- + Wenge + Black Pearl
- + Wenge + Pearl

BALTIC EV ON BASE

3-Way Satellite on Base

Dimensions H x W x D: 27 x 27 x 27 cm / 10.6 x 10.6 x 10.6"
Frequency Response: 80-25,000 Hz – 220 W – 90 db*
Weight: 7.5 kg / 17 lbs

- Pearl
- Black Pearl



RIGA ON STAND

2-Way Satellite Speaker on Stand

Dimensions H x W x D: 123 x 34 x 39 cm / 48.4 x 13.4 x 15.4"
Frequency Response: 96-20,000 Hz – 150 W – 90 db*
Weight: 14 kg / 31 lbs

- + Wild Cherry + Black Pearl
- + Santos + Black Pearl
- + Wenge + Black Pearl
- + Wenge + Pearl

RIGA ON BASE

2-Way Satellite on Base

Dimensions H x W x D: 23 x 22 x 20 cm / 8.8 x 8.7 x 8.3"
Frequency Response: 96-20,000 Hz – 150 W – 90 db*
Weight: 5.5 kg / 12 lbs

- Pearl
- Black Pearl



SANTORIN 30

Floorstanding Subwoofer

Dimensions H x W x D: 43 x 36 x 38 cm / 16.9 x 14.2 x 15"
Frequency Response: 22-200 Hz – Active – 1,000 W
Weight: 28 kg / 62 lbs

- Pearl
- Black Pearl



IO2 ON STAND

2-Way Satellite Speaker on Stand

Dimensions H x W x D: 112 x 33 x 33 cm / 44.1 x 13 x 13"
Frequency Response: 150-22,000 Hz – 80 W – 93 db*
Weight: 6 kg / 13 lbs

- + Light Oak + Black Pearl
- + Light Oak + Glossy Black
- + Wenge + Pearl
- + Wenge + Black Pearl
- + Wenge + Glossy Black



IO2 ON BASE

2-Way Satellite Speaker on Magnetic Base

Dimensions H x W x D: 16 cm Ø / Ø 6.3"
Frequency Response: 150-22,000 Hz – 80 W – 93 db*
Weight: 1.8 kg / 4 lbs

- White
- Pearl
- Glossy Black
- Black Pearl

SANTORIN 30i

Floorstanding Subwoofer

Dimensions H x W x D: 43 x 38 x 47 cm / 17 x 15 x 18.5"
Frequency Response: 29-200 Hz – Active – 450 W
Weight: 28 kg / 62 lbs

- Pearl
- Glossy Black



SANTORIN 25 M2

Floorstanding Subwoofer

Dimensions H x W x D: 42 x 36 x 38 cm / 16.5 x 14.2 x 15"
Frequency Response: 34-150 Hz – Active – 250 W
Weight: 19 kg / 42 lbs

- Glossy Black
- White



CINÉOLE SYSTEM

Active 2.1 system

Dimensions satellite: 13 cm Ø / Ø 5.1"
Dimensions Subwoofer: 33 x 33 x 36 cm / 13 x 13 x 14.2"
Frequency Response: 35-22,000 Hz – 80 W
Satellite Weight: 1.3 kg / 2.9 lbs
Subwoofer Weight: 11.5 kg / 25 lbs

- Glossy Black
- Glossy White



Eole 3 5.1 SYSTEM

3-Way 5.1 system

Dimensions satellite: 13 cm Ø / Ø 5.1"
Dimensions Subwoofer: 33 x 33 x 36 cm / 13 x 13 x 14.2"
Frequency Response: 29-22,000 Hz
Power handling satellite / Subwoofer: 70 W / 200 W
Satellite Weight: 1.3 kg / 2.9 lbs
Subwoofer Weight: 9.3 kg / 20.4 lbs

- Glossy Black
- Glossy White



SANTORIN 21 M2

Floorstanding Subwoofer

Dimensions H x W x D: 33 x 33 x 36 cm / 13 x 13 x 14.2"
Frequency Response: 29-150 Hz – Active – 200 W
Weight: 9.3 kg / 22 lbs

- Glossy Black
- Glossy White



Alcyone 2 5.1 SYSTEM

2-Way 5.1 system

Dimensions satellite: 9.9 cm Ø / Ø 3.9"
Dimensions Subwoofer: 30 x 30 x 30 cm / 11.8 x 11.8 x 11.8"
Frequency Response: 32-20,000 Hz
Power handling satellite / sub woofer: 50 W / 100 W
Weight satellite / Subwoofer: 0.75 kg - 1.6 lbs / 10 kg - 22 lbs

- Glossy Black
- Glossy White



CUSTOM INSTALL

ON WALL



BALTIC EV

Wall-Mounted 3-Way Satellite

Dimensions H x W x D:
24 x 27 x 35 cm / 9.4 x 10.6 x 13.8"
Frequency Response:
80-25,000 Hz – 220 W – 90 db*
Weight: 7.5 kg / 17 lbs

- White
- Pearl
- Black Pearl



RIGA

Wall-Mounted 2-Way Satellite

Dimensions H x W x D:
22 x 22 x 27 cm / 8.7 x 8.7 x 10.6"
Frequency Response:
96-20,000 Hz – 150 W – 90 db*
Weight: 6 kg / 12 lbs

- White
- Pearl
- Black Pearl



IO2

2-Way Satellite on Magnetic Base

Dimensions: 16 cm Ø / Ø 8"
Frequency Response:
150-22,000 Hz – 80 W – 93 db*
Weight: 1.8 kg / 4 lbs

- Pearl
- White
- Black Pearl
- Glossy Black



EOLE 3

2-Way Satellite on Magnetic Base

Dimensions: 13 cm Ø / Ø 5.1"
Frequency Response:
150-22,000 Hz – 70 W – 90 db*
Weight: 1.3 kg / 2.9 lbs

- Glossy White
- Glossy Black



ALCYONE 2

1-Way Satellite on Magnetic Base

Dimension: 9.9 cm Ø / Ø 3.9"
Frequency Response:
160-20,000 Hz – 50 W – 87db*
Weight: 0.75 kg / 1.5 lbs

- Glossy White
- Glossy Black



ZEF 13

Wall-mounted 2-Way speaker

Dimensions H x W x D:
26 x 20 x 19 cm /
10.3 x 7.7 x 7.6"
Weight: 3.2 kg / 7 lbs

- White
- Black



ZEF 17

Wall-mounted 2-Way speaker

Dimensions H x W x D:
30 x 23 x 23 cm / 11.8 x 9 x 9"
Weight: 4.5 kg / 9.9 lbs

- White
- Black



Optional ball bracket

- White
- Black

IN WALL



ALTURA MC IW

3-Way in Wall Speaker

Dimensions H x W x D: 150 x 36 x 8.6 cm /
59 x 14.2 x 3.4"
Frequency Response:
50-24,000 Hz – 100 W – 90 db*
Weight: 4.7 kg + 9.4 kg (back box) / 10 lbs + 20.7 lbs
White, Paintable



ANTIGUA IN WALL

2-Way in Wall Speaker

Dimensions H x W x D: 32 x 23 x 8.8 cm / 12.6 x 9.1 x 3.5"
Frequency Response: 53-22,400 Hz – 40 W – 88 db*
Weight: 2.2 kg / 4.9 lbs
White, Paintable



MINORCA IN WALL

3 Way in Wall Speaker

Dimensions H x W x D:
32 x 23 x 8.8 cm / 12.6 x 9.1 x 3.5"
Frequency Response:
57-22,400 Hz – 40 W – 89.5 db*
Weight: 2.5 kg / 5.5 lbs
White, Paintable



SANTORIN IW

1-Way in Wall Subwoofer

Dimensions H x W x D: 108 x 36 x 9.5 cm /
42.5 x 14.2 x 3.7"
Frequency Response: 35-175 Hz – 150 W – 91 db*
Weight: 5 kg + 11.2 kg (back box) / 11 lbs + 24.6 lbs
White, Paintable

Amplifier

Dimensions: 42.5 x 38 x 10 cm / 16.7 x 15 x 3.9"
Weight: 9 kg / 20 lbs

IN CEILING



IO2 IN CEILING

2-Way Satellite with Ceiling Mounts

Dimensions: 26 cm Ø / Ø 10.2"
Frequency Response:
150-22,000 Hz – 80 W – 93 db*
Weight: 1.8 kg / 4.2 lbs
White, Paintable



EOLE IN CEILING

2-Way Satellite with Ceiling Mounts

Dimensions: 13 cm Ø / Ø 5.1"
Frequency Response:
170-22,000 Hz – 70 W – 91 db*
Weight: 1.3 kg / 2.9 lbs
White, Paintable

Optional in-ceiling adapter



ALCYONE 2 IN CEILING ADAPTER

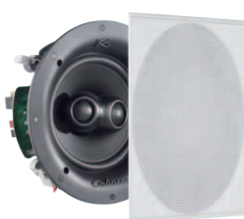
White, Paintable



ARCHIPEL 17ICP

In-Wall / In Ceiling 2-Way Speaker with Pivoting tweeter

Dimensions H x W x D:
24 x 24 x 9.7 cm / 9.4 x 9.4 x 3"
Frequency Response:
48-21,500 Hz – 35 W – 87.5 db*
Weight: 1.3 kg / 3 lbs
White, Paintable



ARCHIPEL 17ICPS

In-Wall / In Ceiling 2-Way Speaker with Pivoting Tweeter

Dimensions H x W x D:
24 x 24 x 10 cm / 9.4 x 9.4 x 4"
Frequency Response:
40-19,000 Hz – 2 x 20 W – 84 db*
Weight: 1.5 kg / 3.3 lbs
White, Paintable



ARCHIPEL 17ICD

In-Wall / In Ceiling 2-Way Speaker with Pivoting Tweeter

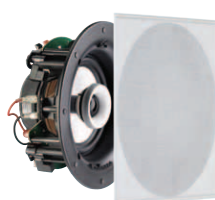
Dimensions H x W x D:
24 x 24 x 10.2 cm / 9.4 x 9.4 x 4"
Frequency Response:
58-22,000 Hz – 40 W – 89.5 db*
Weight: 1.6 kg / 3.5 lbs
White, Paintable



ARCHIPEL 13ICP

In-Wall / In-Ceiling 2-Way Speaker with Pivoting Tweeter

Dimensions H x W x D: 22 x 22 x 9.2 cm / 8.7 x 8.7 x 3.6"
Frequency Response: 65-21,500 Hz – 25 W – 84.5 db*
Weight: 1.4 kg / 3 lbs
White, Paintable



ARCHIPEL 13ICD

In-Wall / In-Ceiling 2-Way Speaker with Pivoting Tweeter

Dimensions H x W x D: 22 x 22 x 9.7 cm / 8.7 x 8.7 x 3.8"
Frequency Response: 73-22,000 Hz – 30 W – 86.5 db*
Weight: 1.6 kg / 3.5 lbs
White, Paintable

WIRELESS HiFi SYSTEMS

High Fidelity Streaming throughout your home



① STREAM 3 SYSTEM

Active 2.1 system with wireless network streaming

Dimensions satellite: 13 cm Ø / Ø 5.1"
Dimensions Subwoofer: 33 x 33 x 35 cm / 13 x 13 x 13.8"
Frequency Response:
29-22,000 Hz – 80 W
Satellite Weight: 1.3 kg / 2.9 lbs
Subwoofer Weight: 9.3 kg / 20.4 lbs

 Glossy Black  Glossy White



② STREAM 1

Active speaker with wireless network streaming

50-20000Hz
2 x 10 W + 2 X 20W
Dimensions:
lying: 13.7 x 46 x 32,5 cm / 5.4 x 18.1 x 12.8 in
standing/hanging: 32.5 x 46 x 13.7 cm / 12.8 x 18.1 x 5.4 in
Weight: 5 kg / 11 lbs

 Glossy Black  Glossy White

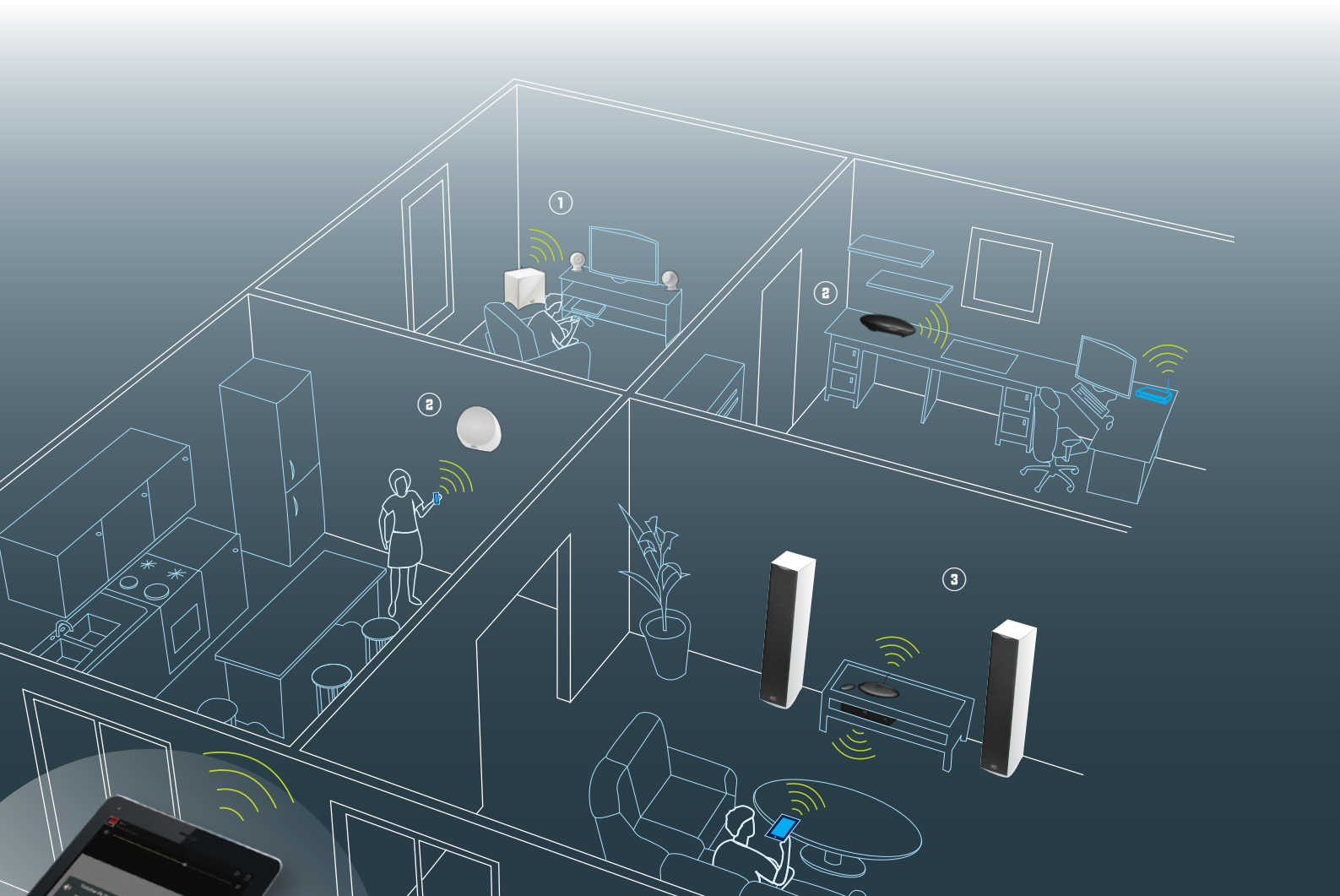


③ STREAM SOURCE

Smart HiFi Source

Dimensions: 4 x 23,1 x 13,6 cm / 1.6 x 9.1 x 5.4 in
Weight: 0.5 kg / 1.1 lbs

 Glossy Black





Cabasse

www.cabasse.com
www.cabasse-stream.com

DOCC386 - 1409 s.o. Ho, CONSEIL & DESIGN - WWW.ISO-HO.FR - 02 98 44 66 02
Photos GPO Morlaix, Mandy Vu Van, J. Ogor Studio Lambe - Due to technical improvements already under way in our constant search for optimum quality, Cabasse reserves the right to modify all the models presented in specification sheets, advertising materials and manuals without prior notice.

