

MARTIN LOGAN®

The Loudspeaker Technology Company

p e r f o r m a n c e c o l l e c t i o n



We See Things Differently

When I started MartinLogan research in 1979, everyone knew electrostatic loudspeakers reproduced sound more accurately than anything else on earth.

Everyone also knew that it appeared impossible to make a reliable product from this challenging technology. Almost every other designer defaulted to traditional woofers and tweeters rather than put in the hard work to create a better product and better sound.

We saw things differently. Even though it may have been more difficult, our small team committed to strive for the ideal in both engineering and aesthetic design rather than take the same old road as the rest of the pack.

It took 3 years to resolve the myriad problems. Innovative thinking, Aerospace materials, and

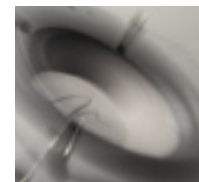
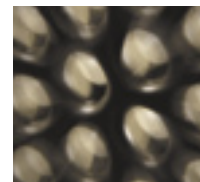
just plain hard work were the only ways to reliably unlock the magnificent performance that ESL technology held. But by 1982 our perseverance and commitment paid off as we introduced what would become a lineage of ground breaking electrostatic loudspeakers... along with a heritage of commitment to the ideal.

Today you find that same unflinching pledge alive and thriving in the heart of everyone at MartinLogan. As you read through this brochure you will clearly see that every individual, whether they are involved in design/engineering or service or manufacturing, starts every day with one question; "What's the ideal solution for the MartinLogan customer?"

That's what we do.



Gayle Martin Sanders—founder



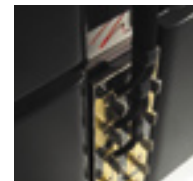


Best Sound of Show —Stereophile Hi-Fi Show

Statement e2—What If?

Ultimate Stereo/ Theater Front

shown with maple trim



Our first 15 years of intense product development and research resulted in numerous breakthrough loudspeaker systems, international awards and thousands of ecstatic customers the world over. Throughout this time, perfect sound reproduction was always at the heart and soul of MartinLogan. Thus, the Statement project fully embodies our essential philosophy and way of life. This absolutely unique loudspeaker system has been a journey of discovery—revealing, challenging, and pushing the boundary that separates the possible from the impossible.

Every aspect of this loudspeaker system has been redesigned and redeveloped in a continuous loop, converging on absolute perfection. Nearly a ton of flawlessly designed audio technology stands 7 feet tall—with 6-foot CLS (curvilinear line source) ESL (electrostatic) transducers, 16 proprietary dipolar dynamic drivers and 16 Balanced-Force™ 12-inch bass drivers seamlessly wrapped in a breathtaking sculpture of ultra-high density material, stainless steel, and solid hardwoods.

From its 350-pound Loganite™ chassis to the stainless steel tips of its custom designed, hand-milled ETC™ (Energy Transfer Coupler) spikes—every sub-assembly, every line, every element, and every performance asserts, no compromise! When in its presence, one experiences the almost mystical and contradictory phenomenon of uncompromised power linked with subtlety, grace, and palpable ambience only perceived when experiencing an original event.

Prodigy

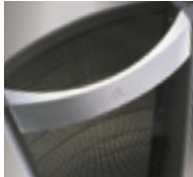
With the answer to “what if” in hand, we focused on the real world—a loudspeaker system of uncompromised performance leveraging our Statement e2 research, yet encompassing a reasonable size and obtainable price. By the time the Prodigy prototype evolved into a real product, we had not only integrated much of the Statement engineering but also developed numerous design innovations.

Utilizing rigidified, isolated, and braced chambers, housing dual high-resolution, high-excursion, aluminum drivers, the Prodigy bass system extends to -3 dB at 28 Hz, yet maintains uniform bass response throughout your room via the proprietary ForceForward™ bass configuration. Isolated, hand-assembled high-pass and low-pass crossover modules utilize a unique double transformer ESL interface, resulting in superb frequency extension and subtlety. Massive, high-purity, low-pass copper coils and the finest grade components throughout result in 300 plus watts RMS power handling without compression—for huge, effortless dynamics!

Custom, hand-milled Prodigy ETC™ spikes and solid, hand-cast aluminum trim and brace pieces are machined and hand-finished to exacting specifications. The ESL (electrostatic) stator utilizes proprietary conformal-coated high-dielectric nylon over perforated tungsten steel. Precise diaphragm support is provided by the same highly rigid ClearSpar™ technology found in all MartinLogan ESL transducers.

Stereo/Theater
Front

shown with optional
natural cherry trim



“Music I’d always loved came alive in a brand-new way.” —Larry Greenhill, Stereophile



Odyssey

Stereo/Theater Front

shown with optional
piano black cabinet
and custom movado trim

From the moment we auditioned the first prototype, the performance and authority of this sleek and powerful loudspeaker amazed us. Requiring 20% less floor space than the Prodigy, Odyssey's large ESL transducer and bass driver compliment maintain incredible bass extension, power, and resolution.



By using two bass drivers in a BalancedForce™ configuration, bass management adapted from the Statement e2 results in easy setup and an effortless, extended bottom-end. Since all cabinet resonance is neutralized, the entire system provides the highest levels of detail and resolution throughout the audio spectrum.



As in all MartinLogan reference level products, each audiophile-grade crossover component is hand-soldered, utilizing point-to-point wiring throughout the signal path. Only the highest-purity copper inductors and highest-grade polyester film capacitors are utilized.



Odyssey's ESL transducer is in many ways ideal in both size and performance. Dramatically smaller than that of the Statement e2, its efficiency, power handling, and bandwidth are extremely close in actual performance, making the Odyssey a true reference value.

Ascent i

Refining the powerful performance of Ascent i required intense engineering and dynamic driver design. The result? An extremely high-resolution, Odyssey-sized ESL transducer and perfectly matched single high-resolution woofer that provide a truly musical performance at an even more affordable price.

The Ascent i expresses MartinLogan's signature language of form and function, as well as much of the breakthrough technology of the Prodigy loudspeaker, maintaining controlled dispersion with outstanding dynamic range, imaging, and detail—all from a rigidly braced, extremely high-density, sculpted MDF cabinet that is sleek and beautifully finished. As in the Prodigy, Odyssey, Aeon i, and Descent, hand-finished hardwood and metal trim is available in 16 distinctive finishes to match any décor.

Audiophile-grade, cost-no-object, hand-assembled, point-to-point wired crossover components provide the ultimate signal path. The soundstage, openness, and accuracy exhibited by its large, reference-quality Generation 2 ESL transducer and aluminum woofer make the Ascent i perfect as a stereo main or a home theater front-channel in a myriad of room sizes and configurations. Prodigy-style ETC™ spikes deliver powerful, tight, well-defined bass.

Stereo/Theater
Front/Surround

shown with optional
light oak trim



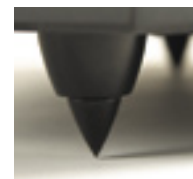
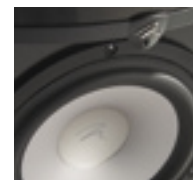
"An achievement repeated nowhere else in the entire audio pantheon." —Ken Kessler, HiFi News



Aeon i

Stereo/Theater
Front/Surround

shown with
aniline dye red trim



Signature MartinLogan ESL performance from a mere square foot of floor space—Aeon i. The design process to establish reference level performance for this amazing loudspeaker was nearly as arduous as that of the Statement e2. It's interesting to note that housed within the affordable Aeon i lies one of the most accurate transducers available in the world—the signature MartinLogan ESL. Created with the same materials, care, and concern found in all Martin-Logan reference level products, Aeon i's Generation 2 ESL exhibits incomparable sonic accuracy, resolution, and detail.

A high-excursion 8-inch aluminum cone driver allows Aeon i to achieve the highest standards of bass control and precision comparable with our ultimate hybrid ESL products. Custom ETC™ spikes contribute to tight, detailed lows and crystal clear highs, assuring that the Aeon i is truly the most accurate, versatile, and refined loudspeaker in its class.

The addition of optional Natural Ambience Compensation (NAC™) makes it easy to experience the Aeon i in a pure "controlled dispersion" audiophile mode or enjoy sound throughout the listening environment in full spectral dispersion mode. Listen and discover power and precision that few loudspeakers can achieve—regardless of price.

"Clarity informed by grace." —Wes Phillips, The Absolute Sound

Clarity

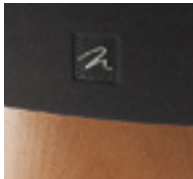
After twenty years committed to engineering reference grade audiophile products, our new challenge was simple—develop an affordable, highly aesthetic and extremely compact product with uncompromised clarity for music and movie lovers the world over.

To meet this demand, our engineers advanced electrostatic technology to new levels, resulting in MicroPerf stators with ClearSpar™ supports achieving higher levels of performance from an extremely compact ESLtransducer. Our team also created NACT™ (Natural Ambience Compensation) technology, making it easier to enjoy the full spectrum of sound throughout the listening environment.

Not content with traditional cabinet technology, we integrated sonic welding with constrained layer laminates, creating a radically new cabinet design. Lightweight, yet extremely rigid, this unique technology allowed our designers to work in real wood materials, yet provide graceful flowing lines. These innovations, combined with a powerful, high-resolution aluminum driver and low-voltage power supply, allow Clarity's three handsome color palettes to enhance your décor, compliment your lifestyle and exceed every performance expectation.

Stereo/Theater
Front/Surround

shown with
native cherry cabinet
and white bronze trim



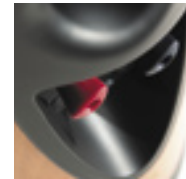
"2003-04 European Imaging and Sound Association Audio Product of the Year"



Mosaic

Stereo/Theater
Front/Surround

shown with
dark mahogany cabinet



Recent advancements in magnetic thin-film technology have resulted in MartinLogan's extremely compact, new ATF™ (Advanced Thin Film) transducers—pushing the limits of both performance and price. We found ATF™ drivers superior to traditional transducer technology; while at the same time approaching many advantages of our reference grade ESL transducer, such as 3-dimensional sound staging and pinpoint imaging.

By combining these new ATF™ drivers with an audiophile-grade crossover, Clarity's constrained layer, sonically welded cabinet technology and a high-resolution aluminum woofer, Mosaic provides the highest in performance and aesthetics!

Available in three distinctive wood finishes—native cherry, dark mahogany and black—the Mosaic is equally at home in your reference grade music system or home theater, enhancing any décor and providing a stunning performance every time.

"MartinLogan has done their homework again..."—Mosaic Owner

Montage

Challenged to deliver MartinLogan's most affordable, high-performance loudspeaker to date, the world-class design and engineering team that created the incomparable Statement e2 loudspeaker perfected numerous technologies and materials to bring you the Montage.

Incorporating Clarity and Mosaic cabinet, woofer, and crossover technology, the Montage hybrid ATF™ loudspeaker effortlessly reproduces every detail of recorded sound. The same dipole/open-air radiation pattern and high-performance Vojtko™ filtering found in all MartinLogan floor standing loudspeakers provides a realistic 'you are there' listening experience with holographic ambience and unparalleled precision.

Fully compatible with all audio/video equipment, Montage excels as a stereo main, home theater front, or effect channel anywhere you want outstanding sound reproduction. Montage is available in two beautiful wood finishes—native cherry and black.

Stereo/Theater
Front/Surround

shown with
black cabinet



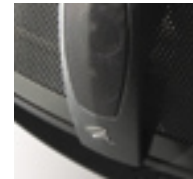
"The competition must be frightened..."—Montage Owner



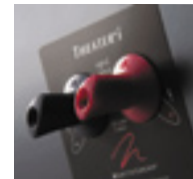
Theater i

Theater
Center/Surround
On/Off-Wall

A vast amount of engineering and design expertise in both electrostatic and dynamic transducer technology has allowed us to accomplish the seemingly impossible. Imagine the incomparable Prodigy loudspeaker magically transformed into center channel perfection—Theater i.



In a home theater, the center channel is the most critical component. Only gossamer-thin, ESL technology can flawlessly deliver the clarity, precision, intelligibility, and resolving power required for a realistic "you are there" home theater experience where voices and on screen audio content occupy an open and transparent space, rather than sounding like they're emerging from a box.



A unique controlled dispersion array and Micro-Perf Generation 2 ESL transducer provide an expanded yet precise dispersion pattern, minimizing potentially destructive room interactions. A perfectly balanced, multi-mount stand and low-voltage power supply make placement and alignment simple, whether you choose a set-top, wall mount, or on-floor installation. The unique performance capabilities of the Theater i make it the only center channel in the world capable of matching the incomparable performance of the Statement e2 loudspeaker system in Martin-Logan's ultimate reference home theater.



"Impressive enough to defy comparison." —Fred Manteghian, Stereophile Guide to Home Theater

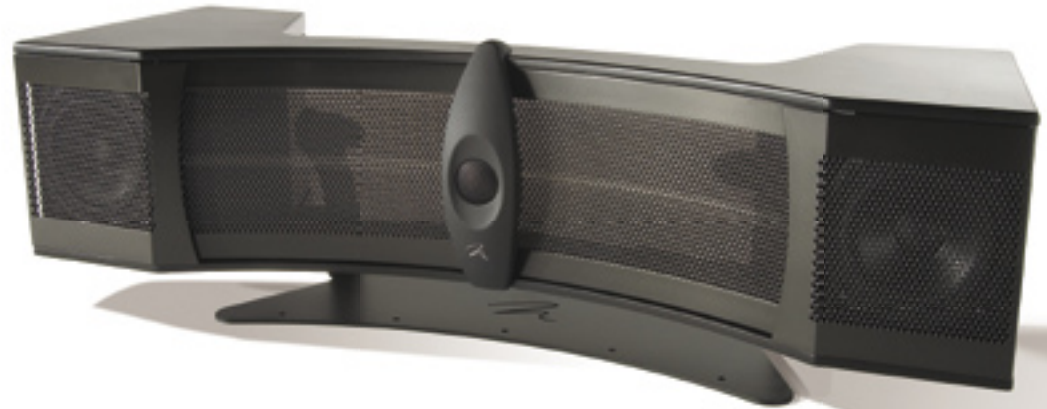
Cinema i

Designed and engineered to deliver critical reference center-channel performance that only hybrid ESL technology can provide—Cinema i. Leveraging research from the Theater center-channel loudspeaker, the Cinema i's compact size and precision performance make it the perfect compliment to any system—from modest to extreme.

At the heart of the system, a Generation 2 electrostatic transducer reveals cinematic sound staging, intelligibility, and precision rarely obtainable in even the most expensive traditional dynamic technology products. MicroPerf and ClearSpar™ technology further advance this exceptional transducer. Housed in a rigid, sculpted cabinet, the perfectly matched high and low frequency dynamic drivers and audiophile-grade crossover components team up with the extreme precision of our ESL transducer to achieve the highest levels of performance.

Through hours of testing we've found the Cinema i to perform equally well not only as a center channel, but also as rear and side home theater surrounds. An integrated multi-mount stand and low-voltage power supply allow the Cinema i to easily install on a floor, wall, ceiling, or any where in between.

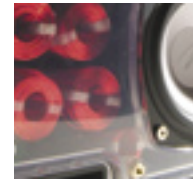
Theater
Center/Surround
On/Off-Wall



"The sexiest center-channel speaker on the market." —Wayne Garcia, etown.com



Stereo/Theater
Front/Surround/
Center
On/Off-Wall
shown with silver faceplate
and silver grill



Fresco

A masterpiece of miniaturization, the versatile Fresco required tremendous amounts of engineering and innovation to compress this level of performance into such a compact product. The solution? High-resolution ATF™ transducers, cost-no-object audiophile-grade crossovers and gas-assist molded, super-dense, low mass cabinetry. The result—stunning precision, power and detail. Fresco—graceful, beautiful and uncompromised in performance and design.

Extending only 6 inches from the wall, Fresco fades into the background when the lights come up. Its sweeping lines and vivid textures enhance any décor, from conservative to modern. Perfectly matching the latest generation of plasma screens and video products, the interchangeable faceplate and grill options establish new levels of flexibility, making it easy to accommodate your style requirements in any home environment. Additionally, you can custom paint the faceplate to match any interior.

Equally at home as a main, center or surround channel, the Fresco is comfortable anywhere in your room and is available with a variety of hardware to accommodate any installation—whether mounted horizontally or vertically, on a ceiling, wall, or on an optional floor or table stand.

"One of the most beautiful systems I've laid eyes on." —Al Griffin, Sound & Vision

Vignette

You'll immediately recognize the sophistication of this reference on-wall loudspeaker by its weight alone. Descended from the revolutionary Fresco, the Vignette incorporates the same high-excursion dynamic driver engineering, massive audiophile grade crossover components and proprietary Vojtko™ filtering used throughout MartinLogan's reference line. These features, in combination with the excellent performance of ATF™ (Advanced Thin Film) transducer technology and a proprietary super-dense, low mass cabinet, deliver a level of power and performance seldom found at even twice the price.

When using the optional floor or table-stands, Vignette demonstrates amazing performance capabilities in dedicated 2-channel audiophile systems. Used as an on-wall main, center or rear channel in a high-performance home theater, Vignette is equally at home in either horizontal and vertical orientations using the standard wall bracket or an optional multi-pivot wall bracket.

Stereo/Theater
Front/Surround/
Center
On/Off-Wall
shown with
silver grill





Voyage



Vignette

Script i

A one-of-a-kind, audiophile-grade hybrid ESL on-wall speaker that perfectly matches any of our floor-standing hybrid ESL loudspeakers—Script i. At our first listening session we were blown away by how well the Script i worked, not only as a surround channel, but also as a front channel. This high-performance wall-mounted hybrid electrostatic speaker, used in either a dipolar or direct radiating installation, makes building a no-compromise home theater or custom audio installation simple.

Script i's MicroPerf Generation 2 ClearSpar™ ESL transducer, combined with a high-resolution bass reflex, optimized woofer and audiophile-grade crossover components, provides exceptional power handling, resolution, detail, and controlled dispersion with accurate low-end performance. Discretely sized at only 7 inches deep, the Script i rotates on its pivoting wall bracket to fine tune placement. A low-voltage power supply enhances placement options and ease of installation.

With three décor-friendly trim rail options—silver, white bronze, and black—Script i is a perfect visual compliment to the entire line of MartinLogan loudspeakers. Script i—the only ESL surround channel for high-resolution reference home theater.

Stereo/Theater
Front/Surround
On-Wall

shown with
white bronze trim

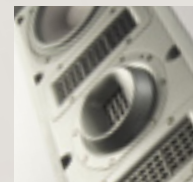
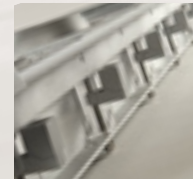
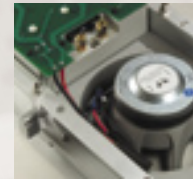


"The entire MartinLogan system is first-class." – Wayne Garcia, etown.com

Voyage

Stereo/Theater
Front/Surround/
Center
In-Wall

shown with silver grill



Feeling more like precision componentry from a formula-one vehicle than an in-wall loudspeaker, the impressive Voyage, when installed, assumes the grace and elegance of fine architecture.

With uncanny sound staging and eye-popping dynamics, Voyage merges sophisticated aluminum element woofers with unprecedentedly precise ATF™ (Advanced Thin Film) driver technology. Internally, the audiophile grade crossover incorporates massive air-core coil inductors, low gauge, high-purity copper wiring, and the same low distortion polypropylene capacitors found in the flagship Statement e2 loudspeaker—all carefully mounted to a double-thick circuit board with ultra-wide traces.

Extruded and milled, the Voyage aluminum chassis exhibits rigidity capable of stiffening an entire wall. Constant control, die-cast aluminum mounting locks assure quick, trouble-free installation while maintaining the highest levels of acoustic integrity. Additionally, the Industry's most highly adjustable tweeter alignment sphere allows incredible adaptability in any environment.

Paintable end-caps and a selection of grill cover colors endow the Voyage with the flexibility to complement any décor.

Passage

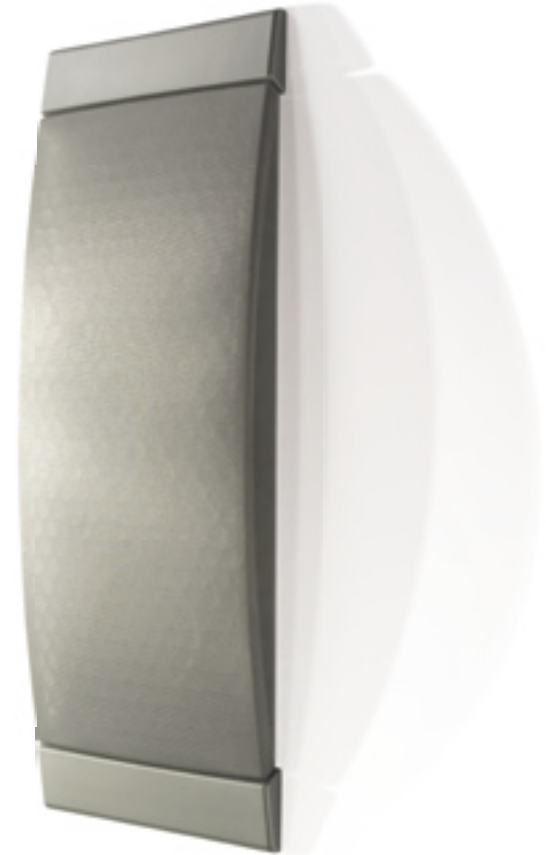
40% smaller than the flagship Voyage, yet amazing in performance, the diminutive but powerful Passage in-wall loudspeaker is both elegant and affordable.

Integrating the superb ATF™ (Advanced Thin Film) high-frequency technology and the same sophisticated dynamic driver engineering, audiophile grade crossover topology, and precision Vojtko™ filtering found throughout MartinLogan's reference line, the Passage renders staggering sonic imagery.

Easy to install, the Passage features the same rigid chassis, mounting lock and tweeter alignment sphere technology as its big brother. Paintable end-caps and a selection of grill cover colors allow perfect matching with any décor.

Stereo/Theater
Front/Surround/
Center
In-Wall

shown with silver grill





"The most significant new product of the past year."—Ken Kessler, Robb Report

Descent

Stereo/Theater Subwoofer

shown with custom
dark mahogany trim



The most anticipated and reviewed reference subwoofer of the last decade—Descent. Five years of exhaustive research in amplification, driver, cabinet, and acoustic control technologies, combined with MartinLogan's unrivaled expertise in hybrid transducer design, advances subwoofer performance and system integration to a new standard—matching the flawless purity of our ESL transducer.

Descent's innovative three-woofer Trilinear™, BalancedForce™ design dramatically reduces spurious cabinet resonances in your room ten-times (20dB) beyond all traditional driver topologies. Sophisticated and advanced, Descent's servo monitoring and control system coupled with our audiophile-grade switching amplifier, continuously analyzes and corrects even the slightest deviation from the original signal. Huge excursion and massive cubic displacement can then be executed to exacting standards resulting in power and precision at all volume levels and in all applications.

It took time for our engineering team to discover the final secret of subwoofer/system integration. Designed to flawlessly align with your existing system in both the amplitude and time domain, the proprietary, reference-grade, discrete component Vojtko™ crossover provides seamless integration with any system—from MartinLogan electrostatic to conventional dynamic speakers. Descent is available in 16 distinctive hardwood and metal trim finishes.

Depth

Utilizing all of the innovative technology from the Descent subwoofer in a cabinet 30% smaller, Depth blends quickly and easily into any audio system—from reference two-channel to multi-channel home theaters. Its 25Hz control tames standing waves that cause weak or booming bass, and advanced servo monitoring and control continuously analyzes driver performance and corrects any deviation from the original signal, resulting in pure, powerful bass—everywhere.

Depth's innovative TriLinear™, BalancedForce™ driver configuration uses three identical drivers to maintain the magnificent control of an advanced small driver while moving the same amount of air as a driver three-times larger, and at the same time eliminate spurious cabinet vibrations found in traditional subwoofers. Custom MartinLogan ETC™ spikes couple the Depth directly to your floor to eliminate lost energy and deliver a tight, detailed, sub-bass performance.

Available with either clear or black-brushed aluminum trim, the Depth is as striking in appearance as it is in performance—whether placed in a corner, under an end table or behind your favorite chair.

Stereo/Theater Subwoofer

shown with
black aluminum trim



"The Depth added tremendous emotional weight, suspense and energy..."
—Larry Greenhill, Stereophile



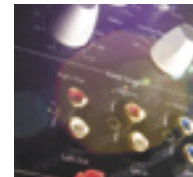
Grotto

Stereo/Theater Subwoofer

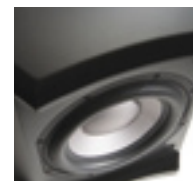
Our engineers and designers were presented with the challenge of delivering precise and explosive MartinLogan sub-bass performance at an extremely affordable price, without compromising quality. More like contemporary sculpture than exotic home theater equipment, the compact Grotto combines extended bass and unparalleled precision with an attractive contemporary look that fits perfectly into any environment.



MartinLogan's proprietary audiophile-grade amplifier, which delivers explosive power and advanced servo monitoring and control, combined with the same 10-inch woofer used in the reference-grade Descent subwoofer, allows the Grotto to set the standard in its class—providing low distortion and clean, powerful bass rarely found in competitors at even twice the price.



A proprietary 25Hz level control tames standing waves that cause weak or booming bass. Grotto's audiophile-grade, phase tracking Vojtko™ crossover, combined with variable low-pass and phase controls, enables you to tailor performance to any room, providing seamless integration with any system—from 2-channel to multi-channel home theater.



"You won't be disappointed." —Al Griffin, Sound & Vision

Dynamo

Power. Precision... Obtainable no other way.

Our Design and Engineering team compressed unprecedented sophistication and technology into this compact yet monstrous subwoofer! Partnering with the world's most talented manufacturers allows us to provide the huge performance of the Dynamo at an extremely affordable price.

Looking inside, you will find each critical element painstakingly designed and manufactured to the same high standards applied to our flagship Descent subwoofer—from amplification and filtering to driver design and cabinet construction.

Variable low-pass and phase controls enable you to custom tailor performance to any listening environment. In addition, Dynamo can quickly transform from a down-firing to front-firing configuration, achieving maximum performance when installed inside of a cabinet.

Stereo/Theater Subwoofer

shown here
in black and silver



Down-Firing
Configuration

Front-Firing
Configuration



Delivering Ultimate Performance

From the moment Gayle turned up the first prototype MartinLogan ESL transducer, we've strived for excellence in everything we do. At MartinLogan you will find our in-house engineering and industrial design team custom specifying or designing each individual component—assuring that every detail, no matter how small, goes far beyond the world of traditional loudspeaker design.

We wrap ultimate performance and technology in uncompromised design—creating truly unique products worthy of the MartinLogan name. That's why we constantly strive for excellence—not only in engineering and design, but also in how we interact with one another, from those of us within MartinLogan and our handpicked and trained dealer network to you, our worldwide family of customers.

Our award-winning, in-house design team, combining over a century of collective industry experience, visualize the future surface-by-surface, perpetually committed to testing and retesting materials, aesthetics, and construction techniques to discover the ideal solutions for each unique MartinLogan product. Our world-class engineering team design and innovate new solutions and analyze countless crossover, circuit and driver topologies to assure that each MartinLogan product reveals every nuance and detail of recorded sound.

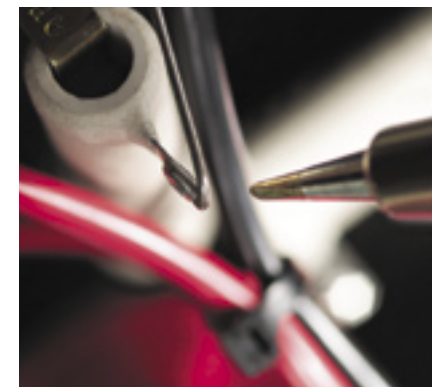
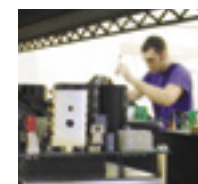
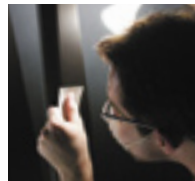
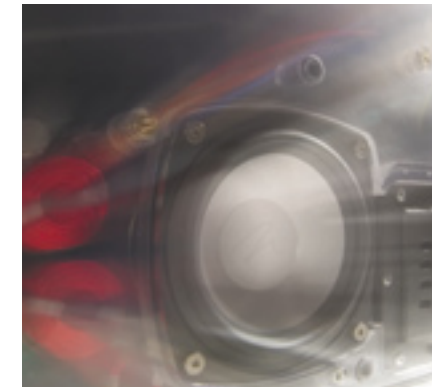
Every high-performance MartinLogan product is manufactured to exacting tolerances with constant

diligence towards exceeding your every expectation. With over two dozen quality checks throughout the hand-building process, our team of talented craftspeople manufactures each ultimate product to exacting tolerances with constant diligence towards exceeding your every expectation.

This commitment permeates our entire manufacturing team from purchasing and quality assurance, to the coatings and shipping departments—each member totally committed to contributing their heart and soul, time and time again.

Rigorous quality testing of each MartinLogan transducer assures levels of performance beyond any other technology. Specially designed, proprietary woofers deliver bass with accuracy and authority. The industries highest-grade, most uniform MDF, and loop after iterative loop of hand-shaping, sanding, painting and finishing of MartinLogan cabinetry guarantee flawless, attractive, and durable surfaces. Point-to-point wiring, hand soldering and testing of MartinLogan's custom audiophile-grade crossover components preserve the original audio signal, assuring that each product delivers ultimate performance.

When you buy MartinLogan, you buy a culture that strives to deliver excellence and ultimate commitment on every level.





MartinLogan Technology Summary

For additional details regarding MartinLogan technology, please contact your dealer, visit martinlogan.com, or call our world headquarters to request detailed technology briefs.

ATF™

Advanced Thin Film (based on RADIA planar technology)—An ultra-low mass, aluminum-etched Kaladex diaphragm is suspended between and precisely controlled by two arrays of high-field strength, neodymium super-magnets. When an audio signal from your amplifier is applied to the aluminum-etched diaphragm, it is simultaneously pushed and pulled within the magnetic field created by the neodymium magnets, causing the diaphragm to move and produce sound. The precise control achieved by this design provides much of the power, detail, linearity, resolution, and openness of our reference-standard electrostatic panels—all from a transducer that can be measured in square inches rather than square feet.

BalancedForce™

Multiple drivers are positioned in such a way that forces inside the cabinet operate in exact opposition, reducing spurious cabinet resonances in your room ten-times (20dB) more than any other driver topology.

ESL

Electrostatic (ESL) transducer technology, the most accurate loudspeaker technology on the planet, provides detailed, high-resolution sound

with linearity, transparency, and openness beyond any other technology. A transparent, ultra-responsive, gossamer thin-film diaphragm is suspended between spacing spars and two insulated, perforated, high-voltage steel stators. When the audio signal from your amplifier is applied to the oppositely charged stators the alternating polarity causes electrostatic energy to simultaneously push and pull the diaphragm. The resulting movement produces the signature MartinLogan sound that has captivated audio enthusiasts for more than twenty years.

ETC™ Spikes

Engineered to couple your speaker directly to the floor, ETC (Energy Transfer Coupler) spikes minimize lost energy and allow tighter, better defined bass, cleaner, more dynamic highs, and improved imaging and focus.

ForceForward™

By shifting energy below 100Hz in time (phase) we condition the distance relationship between the two bass drivers in such a way that the energy arrives at a sum in the front, yet results in a null in the back. This causes a near complete absence of energy between the rear wall and the speaker and a coherent wave front directed forward, resulting in easier room placement and more uniform bass throughout the room.

MicroPerf

By reducing the size of openings in the ESL stator, MicroPerf design maximizes efficiency

and dispersion of sound and increases the optical clarity of small ESL transducers. Through rigorous testing our engineers have determined that the advantages of MicroPerf technology only become apparent in smaller ESL transducers. For this reason, our larger ESL products utilize the traditional stator perforation pattern found on all MartinLogan ESL products since 1983.

NAC™

Natural Ambience Compensation (NAC) makes it easy to experience a pure “controlled dispersion,” audiophile performance, or enjoy sound throughout the listening environment in full spectral dispersion mode. A true audiophile solution, NAC drivers are parallel to the signal path and feature an on/off switch to adjust for listener preference.

Servo Monitoring & Control

By constantly monitoring output and correcting any deviation from the pure audio signal, servo-monitoring and control guarantees distortion is reduced as much as 10-fold for a precise and powerful, yet musical, sub-bass performance.

TriLinear™

The use of three identical drivers maintains the magnificent control of an advanced small driver while moving the same amount of air as a driver three times larger, allowing precise, yet powerful bass in a small package.




	Category	Drive Components/Configuration			Frequency Response (Hz)	Dispersion		Crossover Frequency (Hz)	Sensitivity (2.83 volts/meter)	Impedance (Ohms)	B...
		High-Frequency	Midrange	Bass		Vertical (line source)	Horizontal				
STATEMENT E2	Front	ESL		8x7"(17.8cm) Paper 8x12"(30.5) Paper BalancedForce	18–22,000	70"(177.8cm)	30°	55, 220	91dB	5, 1.5@20kHz	vi
PRODIGY	Front	ESL		10"(25.4cm) Aluminum 10"(25.4cm) Paper ForceForward	28–22,000 (±3dB)	48"(121.9cm)	30°	250	91dB	4, 1@20kHz	+3
ODYSSEY	Front	ESL		10"(25.4cm) Paper, 8"(20.3cm) Paper	35–22,000 (±3dB)	48"(121.9cm)	30°	250	90dB	4, 1@20kHz	–3
ASCENT I	Front/Surround	ESL		10"(25.4cm) Aluminum	35–22,000 (±3dB)	48"(121.9cm)	30°	280	90dB	4, 1.2@20kHz	–3
AEON I	Front/Surround	ESL, NAC Aluminum Dome		8"(20.3cm) Aluminum/Bass Reflex	43–22,000 (±3dB)	37"(93.9cm)	30°	450	89dB	4, 1.1@20kHz	
CLARITY	Front/Surround	ESL, NAC Silk Dome		8"(20.3cm) Aluminum/Bass Reflex	46–22,000 (±3dB)	26"(66.0cm)	30°	450	89dB	6, 1.1@20kHz	
MOSAIC	Front/Surround	ATF	ATF	8"(20.3cm) Aluminum/Bass Reflex	46–20,000 (±3dB)	–	–	500, 3200	90dB	5	
MONTAGE	Front/Surround	ATF		2x6.5"(16.5cm) Aluminum/Bass Reflex	47–20,000 (±3dB)	–	–	2500	90 dB	5	
THEATER I	Center/Surround	3x1"(2.5cm) Soft Dome	ESL	2x6.5"(16.5cm) Polycone	75–22,000 (±3dB)	–	30°	300, 3000	89dB	6	
CINEMA I	Center/Surround	1"(2.5cm) Soft Dome	ESL	2x5.3"(13.3cm) Polycone	80–20,000 (±3dB)	–	30°	300, 3500	89dB	6	
FRESCO	Front/Surround/Center	ATF	ATF	2x4"(10.2cm) Aluminum/Bass Reflex	75–20,000 (±3dB)	–	–	500, 3200	90dB	5	
VIGNETTE	Front/Surround/Center	ATF	2x4"(10.2cm) Aluminum/Bass Reflex		78–20,000 (±3dB)	–	–	2200	89dB	6	
SCRIPT I	Front/Surround	ESL		6.5"(16.5cm) Polycone/Bass Reflex	70–20,000 (±3dB)	26"(66.0cm)	30°	500	88dB	6, 2@20kHz	
VOYAGE	Front/Surround/Center	ATF	ATF	2x8"(20.3cm) Aluminum	40–20,000 (±3dB)	–	–	350, 3000	91dB	5	
PASSAGE	Front/Surround/Center	ATF		2x6.5"(16.5cm) Aluminum	45–20,000 (±3dB)	–	–	2200	90dB	6	

	Category	Drive Components/Configuration			Frequency Response (Hz)	Filters (Hz)		Phase Settings	Input Impedance (Ohms)	B...
		Bass				High-Pass	Low-Pass			
DESCENT	Subwoofer	3x10"(25.4cm) Aluminum/TriLinear, BalancedForce, Servo Control			18–150 (±3dB)	–	40, 70	0°,90°,180°,270°	20,000/20,000	±
DEPTH	Subwoofer	3x8"(20.3cm) Aluminum/TriLinear, BalancedForce, Servo Control			20–150 (±3dB)	40, 70	30, 35, 45, 55, 65, 80	0°,90°,180°,270°	20,000/20,000	±
GROTTO	Subwoofer	10"(25.4cm) Aluminum/Servo Control			22–150 (±3dB)	70	30, 35, 45, 55, 65, 80	0°,90°,180°	20,000/20,000	±
DYNAMO	Subwoofer	10"(25.4cm) Aluminum			25–120 (±3dB)	70	30–80	0°,90°,180°	20,000/34,000	

Dimensions (without spikes, per channel)	STATEMENT E2 Ultimate Stereo/ Theater Front	PRODIGY Stereo/Theater Front	ODYSSEY Stereo/Theater Front	ASCENT i Stereo/Theater Front/Surround	AEON i Stereo/Theater Front/Surround	CLARITY Stereo/Theater Front/Surround	SCRIPT i Stereo/Theater Front/Surround On-Wall	MOSAIC Stereo/Theater Front/Surround	MONTAGE Stereo/ Front/Su
Height	82", 63"*	67"	67"	64"	57.4"	53"	43.9"	40"	38"
Width	36", 15"*	16.5"	13"	13"	10.3"	10.2"	10.2"	9.5"	9.5"
Depth	28", 23"*	28"	27"	22"	15.5"	12.3"	6.8"	11.7"	11.7"
Weight	900 lbs	133 lbs	105 lbs	72 lbs	55.5 lbs	31 lbs	25 lbs	30 lbs	30 lbs

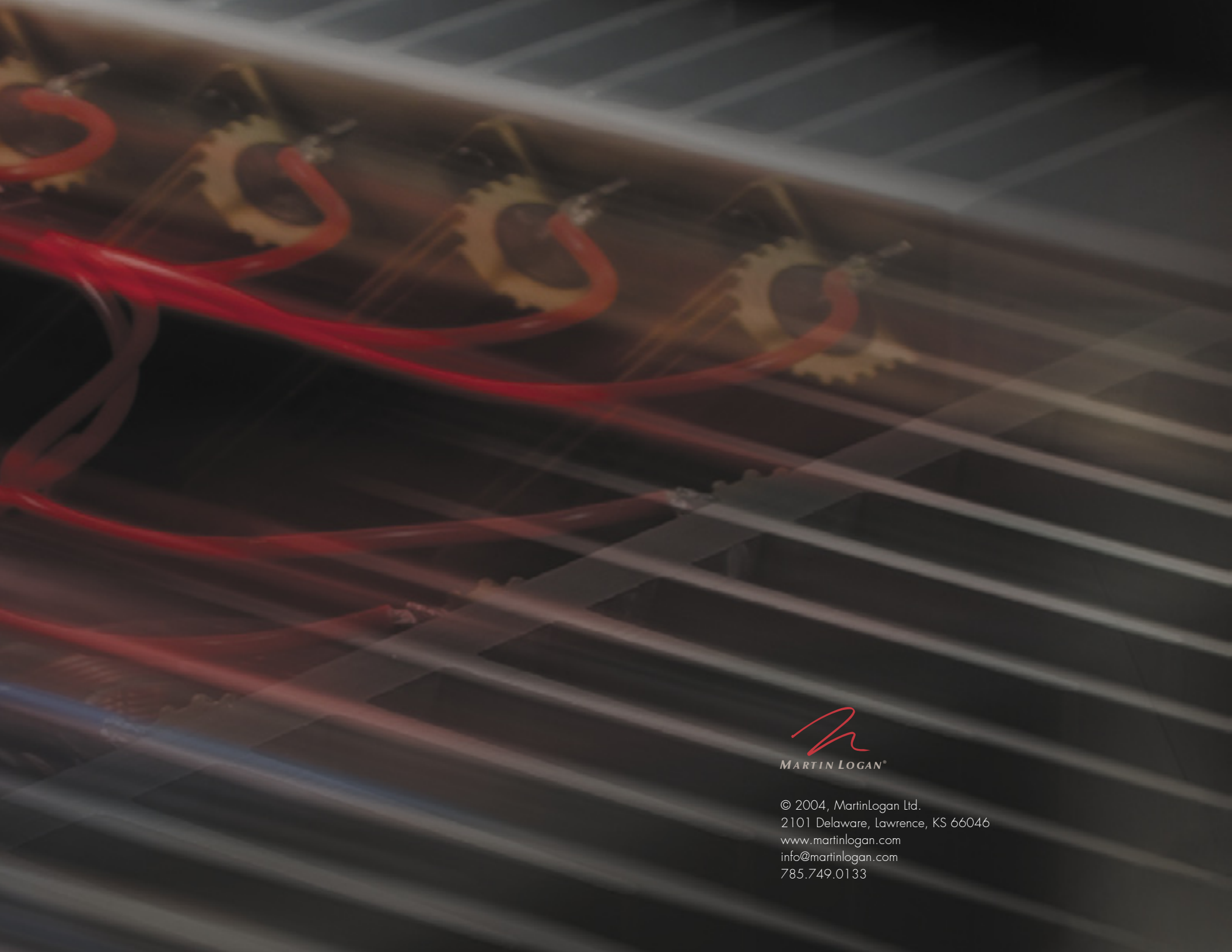
*sub-bass tower

Class Control	Max Power (Watts)	Signal Connection	Low-Voltage	Magnetic Shielding	Included Accessories	Optional Accessories	Cabinet/Trim Options						Trim Legend	
Class Exos	600	Bi-Wire	N	N	Exos Crossover, 3/8"□16 ETC Spikes	–	Nc	Bo	Ma	Lo	Dc	Cu	Al	Clear Brushed Aluminum
120dB below 50Hz	300	Bi-Wire	N	N	3/8"□16 ETC Spikes	–	Nc	Bo	Ma	Lo	Dc	Cu	Ba	Black Brushed Aluminum
120dB below 150Hz	250	Bi-Wire	N	N	3/8"□16 ETC Spikes	–	Nc	Bo	Ma	Lo	Dc	Cu	Bb	Black/Black Grille
120dB below 200Hz	200	Bi-Wire	N	N	3/8"□16 ETC Spikes	–	Nc	Bo	Ma	Lo	Dc	Cu	Bl	Black
–	200	Bi-Wire	N	N	1/4"□20 ETC Spikes	–	Nc	Bo	Ma	Lo	Dc	Cu	Bo	Black Oak
–	200	Single-Wire	Y	N	1/4"□20 , Mini ETC Spikes	MusicCharge™ Cable	Nw	Bs	Dw				Bs	Black Oak/Silver Trim
–	175	Single-Wire	–	N	1/4"□20, Mini ETC Spikes	–	Na	Bo	Dm				Bv	Black/Silver Grille
–	150	Single-Wire	–	N	1/4"□20, Mini ETC Spikes	–	Na	Bo					Cu	Custom Trim Available
–	250	Single-Wire	Y	Y	Wall Bracket/Stand	MusicCharge™ Cable	Bl						Dc	Dark Cherry
–	150	Single-Wire	Y	Y	Wall Bracket/Stand	MusicCharge™ Cable	Bl						Dm	Dark Mahogany
–	200	Single-Wire	–	Y	Wall Bracket/Stand, On-wall/Off-wall Switch	Floor & Table Stand, Multi-pivot Wall Bracket	Wb	Sb	Sv	Bb	Bv	Cu	Dw	Dark Mahogany/White Bronze Trim
–	125	Single-Wire	–	Y	Wall Bracket, Both Grille Cover Colors Included	Floor & Table Stand, Multi-pivot Wall Bracket	SBg						Lo	Light Oak
–	150	Single-Wire	Y	N	Wall Bracket	MusicCharge™ Cable	Wh	Si	Bl				Ma	Maple
–	200	Single-Wire	–	N	Detailed Installation Template	–	Bl	Si	Wt				Na	Native Cherry
–	150	Single-Wire	–	N	Detailed Installation Template	–	Bl	Si	Wt				Nc	Natural Cherry
–	200	Single-Wire	–	N	Detailed Installation Template	–	Bl	Si	Wt				Nw	Native Cherry/White Bronze Trim
–	150	Single-Wire	–	N	Detailed Installation Template	–	Bl	Si	Wt				Sb	Silver/Black Grille
Class Control	Amplifier (Watts)	Signal Connections	Low-Voltage	Magnetic Shielding	Included Accessories	Optional Accessories	Cabinet/Trim Options							
120dB @25Hz	400 (800 peak)	RCA Line In/Out, RCA & XLR LFE In	N	N	3/8"□16 ETC Spikes	–	Nc	Bo	Ma	Lo	Dc	Cu	SBg	Silver Grille & Black Grille
120dB @25Hz	300 (500 peak)	RCA Line In/Out, RCA LFE In, Speaker Level In	N	N	1/4"□20 ETC Spikes	–	Ba	Al					Si	Silver
120dB @25Hz	250 (350 peak)	RCA Line In/Out, RCA LFE In, Speaker Level In	N	N	1/4"□20 Mini ETC Spikes	–	Bl						Sv	Silver/Silver Grille
–	200 (200 peak)	RCA Line In/Out, RCA LFE In, Speaker Level In	N	N	1/4"□20 Mini ETC Spikes, Optional Grille Cover Included	–	Bl	Si					Wb	White Bronze/Black Grille
							Bl	Si					Wh	White Bronze
							Bl	Si	Wt				Wt	White

	THEATER i Theater Center/Surround On/Off-Wall	CINEMA i Theater Center/Surround On/Off-Wall	FRESCO Stereo/Theater Front/Surround/Center On/Off-Wall	VIGNETTE Stereo/Theater Front/Surround/Center On/Off-Wall	VOYAGE Stereo/Theater Front/Surround/Center In-Wall	PASSAGE Stereo/Theater Front/Surround/Center In-Wall	DESCENT Stereo/Theater Subwoofer	DEPTH Stereo/Theater Subwoofer	GROTTO Stereo/Theater Subwoofer	DYNAMO Stereo/Theater Subwoofer
	13"*	10"*	8.3"	7.2"	35.9"	24.5"	21.8"	16.3"	15.4"	13.9"
	43"	33.5"	24"	19.5"	10.5"	8.9"	20"	16.6"	15"	11.7"
	11.5"	10.5"	5.7"	5.3"	5.6"	4.9"	18.3"	16.2"	12.9"	12.9"
	57 lbs	37"	16 lbs	37 lbs	25.5 lbs	16 lbs	95 lbs	65 lbs	40 lbs	28.5 lbs

*with stand

*with stand



© 2004, MartinLogan Ltd.
2101 Delaware, Lawrence, KS 66046
www.martinlogan.com
info@martinlogan.com
785.749.0133