



CONTENTS

	page		page
◆ Elemental Line	3	◆ Special limited edition	9
◆ Essential Line	3	◆ Cartridges	9
◆ Debut Line	4	◆ Tonearms	10
◆ Classic Line	5 - 6	◆ Phono Cables	11
◆ RPM Line	7	◆ Phono Electronics	11 - 15
◆ Signature Line	8	◆ Accessories	15 - 19

ABOUT PRO-JECT AUDIO SYSTEMS

Pro-Ject Audio Systems was founded by Heinz Lichtenegger 1990 in Vienna, with the idea that analogue playback is the most cost-effective way to listen to music of audiophile quality.

Inspired by the concept of supporting analogue in the face of the digital onslaught, Pro-Ject Audio Systems became one of the most powerful driving forces in reinventing analogue turntables for the hi-fi market. Today, Pro-Ject Audio Systems is the world leader in the manufacture of quality hi-fi turntables, as turntables are once again accepted as a must-have for every concerned music lover. Pro-Ject Audio Systems' products are exported to almost 80 countries worldwide and is the recipient of nearly every award in the audio industry.



BY PRO-JECT AUDIO SYSTEMS

Since 2006, Pro-Ject Audio Systems has been bringing its idea "less is more" mission to the digital world. Inspired by the new possibilities of the iPod and high-quality music reproduction from a PC or laptop, Pro-Ject Audio Systems has designed a complete new and revolutionary range of micro high-end Hi-fi components under the family name BOX DESIGN. Starting with the smallest audiophile amp in the world, with open and euphonic sound, Pro-Ject Audio Systems now produces all of the components of traditional hi-fi systems including CD players, tuners, phono amps, headphone amps and switching modules, as well as digital products such as docking stations, D/A converters and streamers to connect with the PC wired or wireless.

BOX DESIGN regards itself as the 'next generation of hi-fi' – the link between the micro-sized hardware of the IT world and the big boxes of the audiophile world. All products, except for speakers and headphones, are designed and produced in Europe.

Pro-Ject: Simple-to-use, high quality sound, astonishing value, long-term stability and good service.



ELEMENTAL

OM 5e SRP € 199,00

Audiophile „Best Buy“ turntable

- Connection to phono preamp or amplifier with phono preamp required • Pre-mounted interconnect cable with gold-plated RCA plugs • Dimensions 430 x 90 x 300mm (WxHxD) • Weight 2,7kg



ELEMENTAL PHONO USB

OM 5e SRP € 249,00

Turntable for Hifi & audio transfer to PC/Mac

- Integrated Phono-MM preamplifier • Connections: line-level RCA to amp & USB to PC/Mac (simultaneously) • Dimensions 430 x 90 x 300mm (WxHxD) • Weight 2,75kg



- Both models:
- Ultra rigid simplified design • Central gravity point minimizing motor and chassis resonances • DC driven AC motor control • 8.6" aluminium tone-arm • Unique OM 5 optimized tonearm • Super easy plug and play without any need of counterweight and antiskating adjustment • Colour options: White/Black, Red/Black, Silver/Black

* Pictured with optional platter Acryl it E



ESSENTIAL II

OM 5e SRP € 259,00

Audiophile „Best Buy“ turntable

- Connection to phono preamp or amplifier with phono preamp required • Pre-mounted interconnect cable with gold-plated RCA plugs • Dimensions 420 x 112 x 330mm (WxHxD) • Weight 4,0kg



ESSENTIAL II PHONO USB

OM 5e SRP € 339,00

Turntable for Hifi & audio transfer to PC/Mac

- Integrated Phono-MM preamplifier • Connections: Line-level RCA to amp & USB to PC/Mac (simultaneously) • Dimensions 420 x 112 x 330mm (WxHxD) • Weight 4,1kg



- All models:
- Belt drive with silicone belt • Low vibration synchronous AC motor • DC driven AC motor control • 8.6" tone-arm with aluminium headshell made out of one piece • Ortofon OM 5e cartridge, pre-mounted • Colour options: Black, red, white



ESSENTIAL II DIGITAL

OM 5e SRP € 379,00

NEW Audiophile „Best Buy“ turntable with analogue & digital optic output

- Integrated Phono-MM preamplifier • Connections: **Digital optical output (Toslink)** & Line-level RCA to amp • Belt drive with silicone belt • Low vibration synchronous AC motor • DC driven AC motor control • 8.6" tone-arm with aluminium headshell made out of one piece • Ortofon OM 5e cartridge, pre-mounted • Colour options: Black, red, white • Dimensions 420 x 112 x 330mm (WxHxD) • Weight 4,1kg



* Pictured with optional platter Acryl it E





DEBUT CARBON DC

OM 10 SRP € 349,00

2M Red SRP € 399,00

Audiophile „Best Buy“ turntable

- Magnetic cartridge options from Ortofon: OM 10 or 2M Red
- Connection to phono preamp or amplifier with phono preamp required
- Pre-mounted interconnect cable with gold-plated RCA plugs

[European Turntable 2012-2013](#)



DEBUT CARBON PHONO USB DC

OM 10 SRP € 449,00

Audiophile turntable for Hifi & audio transfer to PC/Mac

- Magnetic cartridge: OM 10
- Integrated Phono-MM preamplifier
- Connections: Line-level RCA to amp & USB to PC/Mac (simultaneously)

Both models:

- Precision belt drive with synchronous motor
- DC driven precision AC motor control
- New TPE motor suspension
- 8,6" carbon tonearm
- Increased platter size with more weight
- Felt mat
- 8 high-gloss colour options: Green, piano, blue, white, red, light-grey, yellow, purple
- Dimensions 415 x 118 x 320mm (WHD lid closed) • 415 x 365 x 465mm (WHD lid open) • Weight 5,6kg



DEBUT CARBON ESPRIT DC

2M Red SRP € 449,00

Audiophile „Best Buy“ turntable

- Lifestyle for vinyl fans
- 8,6" carbon tonearm
- Heavy non resonant acrylic platter
- Precision belt drive with synchronous motor
- DC driven precision AC motor control
- New TPE motor suspension
- Magnetic cartridge 2M Red from Ortofon
- 8 high-gloss colour options: Red, piano, blue, white, green, light-grey, yellow, purple
- Dimensions 415 x 118 x 320mm (WHD lid closed), 415 x 365 x 465mm (WHD lid open) • Weight 5,6kg



DEBUT CARBON ESPRIT SB DC

2M Red SRP € 499,00

Audiophile „Best Buy“ turntable for 33, 45 & 78 & speed switch

- Lifestyle & convenience for vinyl fans
- 8,6" carbon tonearm
- Heavy non resonant acrylic platter
- Belt drive with synchronous motor
- TPE motor suspension
- DC driven precision AC motor control
- Magnetic cartridge 2M Red from Ortofon
- High-gloss colour options: piano black, red, white
- Dimensions 415 x 118 x 320mm (WHD lid closed), 415 x 365 x 465mm (WHD lid open) • Weight 5,6kg





1XPRESSION CARBON (DC)

n/c SRP € 599,00

Manual turntable including carbon tonearm

2M Red SRP € 650,00

• Full carbon tonearm with spinoff EVO technology • EVO gimbal design • EVO counterweight with arm resonance damping device • Belt drive design • Low noise AC motor • DC driven precision AC motor control • MDF plinth • Platter bearing with low-tolerance chrome-plated stainless-steel axle running on polished ball bearing in brass bearing housing • Motor decoupling reduces vibration • Height adjustable rubber-damped aluminium cones • Gold-plated RCA phono sockets • Colour options: blue, bordeaux, piano black • Dimensions 415 x 130 x 335mm (WHD lid closed) • 415 x 365 x 465mm (WHD lid open) • Weight 5,5kg



1XPRESSION CARBON CLASSIC (DC)

2M Silver SRP € 799,00

Manual turntable with fitted cartridge Ortofon 2M Silver

• Full carbon tonearm with spinoff EVO technology • EVO gimbal design • EVO counterweight with arm resonance damping device • With Highend MM system Ortofon 2M Silver (like 2M Red but with silver spools for superior resolution and more details) • Belt drive design • Low noise AC motor • DC driven precision AC motor control • MDF plinth • Height-adjustable rubber-damped aluminium cones • Motor decoupling reduces vibration • Fine-balanced aluminium platter • Standard felt mat supplied • Low-tolerance chrome-plated stainless-steel axle running on polished ball bearing in brass housing • Interchangeable connecting cables • Gold plated phono sockets and earth screw • Colour options: Mahogany, olive veneer, piano-lacquered black and piano-lacquered white • Dimensions 415 x 130 x 335mm (WHD lid closed) • Weight 5,5kg



2XPERIENCE SB

n/c SRP € 1099,00

2M Silver SRP € 1199,00

NEW Manual turntable. Optional with cartridge Ortofon 2M Silver

• Full carbon 9" tonearm with spinoff EVO technology • EVO gimbal design • EVO counterweight with arm resonance damping device • Belt drive design • **Electronic speed control with 33/45 rpm speed change, which acts as "Speed Box" with ultimate speed stability** • MDF base • Height-adjustable Sorbothane®-damped aluminium cones • Motor decoupling reduces vibration • Resonance-optimised 2kg MDF/vinyl sandwich platter • Screw-down metal record clamp • Low-tolerance chrome-plated stainless-steel axle running on Teflon bearing plate in sintered bronze bearing housing • Gold plated phono sockets and earth screw • Standard cable is provided • Finish options: 3 wood veneer (eucalyptus, palisander, walnut) and 3 high-gloss (HG black piano, HG mahogany, HG olive) • Dimensions 460 x 160 x 360mm (WHD lid closed) • Weight 7,7kg



2XPERIENCE DC ACRYL

2M Silver SRP € 999,00

NEW Manual turntable with cartridge Ortofon 2M Silver

• Full carbon 9" tonearm • Low noise AC motor • **Precision belt drive with synchronous motor** • **DC driven precision AC motor control** • **New TPE motor suspension** • Transparent acrylic plinth • Motor decoupling reduces vibration • Resonance-optimised 2kg MDF/vinyl sandwich platter • Screw-down metal record clamp • Height-adjustable Sorbothane®-damped aluminium cones • Low-tolerance chrome-plated stainless-steel axle running on Teflon bearing plate in sintered bronze bearing housing • Gold plated phono sockets and earth screw • Standard cable is provided • Dimensions 460 x 160 x 360mm (WHD lid closed) • Weight 7,6kg

6PERSPEX DC

n/c SRP € 1.599,00

NEW Manual turntable, Optional with cartridge Ortofon 2M Blue 2M Blue SRP € 1.799,00

• Belt drive design • Transparent acrylic plinth • 3 individually height-adjustable Sorbothane®-damped aluminium cones carry motor sub-chassis • Corian subchassis rests on 3 magnetic fields • Built-in spirit level • **Electronic speed control with 33/45 rpm speed change, which acts as "Speed Box" with ultimate speed stability** • Silent running AC motor • Inverted bearing uses stainless-steel axle carrying a ceramic ball on which ceramic bearing plate runs • 2kg resonance-optimised sandwich platter with 4mm vinyl-layer • Screw-down metal record clamp • 9" Evolution tonearm • Gold plated 5pin to RCA cable included (XLR version as an option) • Dimensions 460 x 183 x 365mm (WHD lid closed) • Weight 10,5kg





XTENSION 9 EVOLUTION

n/c SRP € 2.195,00

Highend turntable with 9" tonearm

• Heavy belt drive turntable • Precision balanced sandwich-platter with vinyl layer • Mass loaded magnetic floating subchassis • Inverted ceramic ball bearing with magnetic support • Heavy weight record clamp • Extremely low level of natural resonance • Perfect decoupling through magnetic feet • Electronic speed control 33/45/78 Rpm • 9" Tonearm 9cc Evolution made from carbon fibre • Inverted tonearm bearings (ABEC 7 quality) • Colour options: Mahogany, olive veneer and piano-lacquered black, white or red • Dimensions 465 x 185 x 350mm (WHD lid closed) • Weight 16kg

[European Analogue Source 2014-2015](#)



XTENSION 10 EVOLUTION

n/c SRP € 3.300,00

Highend turntable with 10" tonearm

• Super-heavy 22kg belt drive turntable • Mass loaded magnetic floating subchassis • Precision balanced sandwich-platter with vinyl layer • Inverted ceramic ball bearing with magnetic support • Heavy weight record clamp • Extremely low level of natural resonance • Perfect decoupling through magnetic feet • Electronic speed control 33/45/78 Rpm • Tonearm 10cc Evolution made from carbon fibre • Inverted tonearm bearings (ABEC 7 quality) • Gold plated 5pin to RCA cable included (5pin to XLR cable for use with Phono Box RS is available on request) • Colour options: Mahogany, olive veneer and piano-lacquered black, white or red • Dimensions 480 x 235 x 400mm (WHD lid closed) • Weight 22kg



XTENSION 12

Pro-Ject 12cc Evolution SRP € 3.990,00

Ortofon RS-309D SRP € 6.500,00

Manual turntable with built-in Pro-Ject Speed Box DS

• Super-heavy 25kg mass load magnetic floating belt drive design • TPE® damped ultra precise balanced sandwich-platter out of special alloy combined with Vinyl layer • Brass record puck • Ultra low noise motor highest selection • Magnet supported, inverted main bearing with ceramic thrust-pad • Integrated Speed Box DS for super silent motordrive and electronically switchable speed • Metal-granulate filled plinth for universal damping • Mass loaded interchangeable armboard • Height adjustable magnet supported feet for perfect isolation • Gold plated 5pin to RCA cable included (5pin to XLR cable for use with Phono Box RS is available on request) • HG colour options: mahogany, olive veneer, piano black • Dimensions 550 x 250 x 450mm (WHD lid closed) • Weight 25kg





RPM 1 Carbon

n/c SRP € 399,00

NEW Manual turntable with 8.6" S-shaped tone arm

2M Red SRP € 449,00

• Belt drive turntable with quiet running synchronous motor • **DC driven precision AC motor control** • Isolated motor platform, decoupled from the plinth • 2-step pulley • Eliminates vibration transmission • Resonance-optimised platter made of medium density fibre • Inverted, chrome-plated stainless-steel axle • Polished metal ball in sintered bronze bearing housing • **Central mass point optimises resonance behaviour** • Interchangeable connecting cables • Gold plated phono sockets and earth screw • Colour options: glossy black, red and white • Dimensions 380 x 110 x 350mm (WHD) • Weight 3,8kg



RPM 3 Carbon

n/c SRP € 650,00

NEW Manual turntable with 10" S-shaped carbon tonearm

2M Silver SRP € 699,00

• Belt drive turntable with quiet running synchronous motor • **DC driven precision AC motor control** • Isolated motor platform, decoupled from the plinth • 2-step pulley • Eliminates vibration transmission • Resonance-optimised platter made of medium density fibre with vinyl layer • **Inverted, chrome-plated stainless-steel axle** • Polished metal ball in sintered bronze bearing housing • **Central mass point optimises resonance behaviour** • Interchangeable connecting cables • Gold plated phono sockets and earth screw • Colour options: glossy black, red and white • Dimensions 447 x 118 x 373mm (WHD) • Weight 5,5kg



RPM 5 Carbon

n/c SRP € 1199,00

NEW Manual turntable with 9" EVO technology carbon tonearm

• Belt drive turntable with quiet running synchronous motor • **DC driven precision AC motor control with electronic 33/45 speed switch** • Isolated motor platform, stands separated from the plinth • Eliminates vibration transmission • **28mm acrylic platter** • **Inverted, chrome-plated stainless-steel axle carrying a ceramic ball on which the ceramic bearing plate runs** • **32mm plinth thickness with carbon layer on top** • Central mass point optimises resonance behaviour • Interchangeable connecting cables • Gold plated phono sockets and earth screw • Colour options: glossy black, red and white



RPM 9 Carbon

n/c SRP € 1995,00

NEW Manual turntable with 9" EVO carbon tonearm

• Belt drive • **DC driven precision AC motor control with electronic 33/45 speed switch** • Isolated motor platform, stands separated from the plinth • **Mass loaded magnetic floating subchassis** • Inverted ceramic ball bearing • Heavy weight record puck • Inverted, chrome-plated stainless-steel axle • Polished metal ball in sintered bronze bearing housing • **7,2kg acoustically inert aluminium platter** • Extremely low level of natural resonance • Central metal block optimises centre of gravity and damps main bearing • Interchangeable connecting cables • Gold plated phono sockets and earth screw • Gold plated 5pin to RCA cable included (XLR version as an option) • Dimensions 440 x 180 x 325mm (WHD) • Weight 16,7kg



RPM 10 Carbon

n/c SRP € 2990,00

NEW Manual turntable with 10" EVO carbon tonearm including Ground it Carbon base

• **Extra-heavy chassis with carbon layer** • Belt drive • **Separate metal housing for motor with built-in DC driven precision AC motor control** • **Electronic 33/45 speed switch** • 3 individually height-adjustable magnetic field feet • Spirit level supplied • **Extra-heavy chassis and granulate filled plinth guarantee constant damping** • **Extra heavy aluminium platter** • Brass record puck • Inverted bearing with stainless-steel axle carrying a ceramic ball on which the ceramic bearing plate runs • Central metal block optimises centre of gravity and damps main bearing • Delivered with heavy turntable platform Ground it Carbon • Gold plated 5pin to RCA cable included (XLR version as an option)



SIGNATURE 10

n/c SRP € 4.990,00

Highend turntable with 10" single-pivot tonearm

- Heavy belt drive turntable • Mass loaded magnetic floating subchassis • Precision balanced heavy-weight magnetically decoupled resonance-optimised alloy platter with vinyl layer • Inverted ceramic ball bearing with magnetic support • Heavy weight record clamp • Extremely low level of natural resonance • Perfect decoupling through magnetic feet • Electronic speed control 33/45 Rpm • Single-pivot precision tonearm Signature 10 • HG colour options: Mahogany, olive veneer and piano-lacquered black • Dimensions 475 x 188 x 350mm (WHD lid closed) • Weight 22,5kg



SIGNATURE 12

n/c SRP € 9.500,00

Non-compromise highend turntable with 12" single-pivot tonearm

- Heavy mass design with 34,3kg total weight • Mass-loaded subchassis design • 10,55kg magnetically decoupled main platter with vinyl layer • Resonance-optimised alloy • Magnetic-floating platter guarantees an absolute quiet running turntable • Inverted main bearing with ceramic ball • Flywheel belt drive • Motor control system with LCD-display • Genuine Pro-Ject Audio Systems design 12" single-pivot tonearm • Wide range of adjustment possibilities and choice of adequate counterweights • Practically every cartridge can be mounted • High gloss metal surface • Piano-lacquer chassis with magnetic decoupling from surface • HG colour options: mahogany, olive veneer and piano-lacquered black • Dimensions 570 x 250 x 470mm (WHD lid closed) • Weight 34,3kg





Parov Stelar PS-00 „Frida“

2M Red SRP € 550,00

NEW Limited edition audiophile turntable

- Collectors item and must have for vinyl and Parov Stelar fans • 7-layer high quality colour printing • Pre-mounted interconnect cable with gold-plated RCA plugs • Based on famous Debut Carbon Esprit



Parov Stelar PS-01 „Wave“

2M Red SRP € 550,00

NEW Limited edition audiophile turntable

- Collectors item and must have for vinyl and Parov Stelar fans • 7-layer high quality colour printing • Pre-mounted interconnect cable with gold-plated RCA plugs • Based on famous Debut Carbon Esprit

Both models: • Precision belt drive with synchronous motor • DC driven precision AC motor control • New TPE motor suspension • 8,6" carbon tonearm • Increased platter size with more weight • Felt mat • Magnetic cartridge Ortofon 2M Red premounted • Connection to phono preamp or amplifier with phono preamp required • Pre-mounted interconnect cable with gold-plated RCA plugs • Dimensions 415 x 118 x 320mm (WHD lid closed) • 415 x 365 x 465mm (WHD lid open) • Weight 5,6kg



PRIMARY

OM 5e SRP € (on request)

NEW Limited edition audiophile „Plug & Play“ turntable

- Belt drive with silicone belt • Low vibration synchronous AC motor • DC driven AC motor control • 8.6" aluminium tone-arm • Unique OM 5 optimized tonearm • Super easy plug and play without any need of counterweight and antiskating adjustment • Connection to phono preamp or amplifier with phono preamp required • Pre-mounted interconnect cable with gold-plated RCA plugs • Complete with acrylic lid • Colour options: White, Black • Dimensions 420 x 112 x 330mm (WxHxD) • Weight 4,0kg



Cartridges



PICK IT MC-1

SRP € 159,00

Phono MC cartridge for turntables

- Moving Coil principle • More dynamic playback than MM cartridges • High trackability • 0,5mV output • MC-1 suits nearly all preamplifiers/step-up transformers • Suitable for light to medium tonearm mass • 1/2-inch mount • As with all MC cartridges, stylus can not be exchanged



Ortofon 2M Silver

SRP € 199,00

Highend MM system

- Exclusive development for Pro-Ject Audio Systems • Based on Ortofon 2M series cartridge with elliptical stylus • Silver spools for superior resolution and more details • High trackability • 2M silver connects directly to MM phono preamp • Suitable for light to medium tonearm mass • 1/2-inch mount • As with all MM cartridges, stylus can be exchanged

PRO-JECT CC TONEARMS (carbon tube + carbon headshell)

	9CC	10CC	12CC
FL	SRP € 549,00	SRP € 569,00	SRP € 799,00
5P	SRP € 579,00	SRP € 599,00	SRP € 829,00
BOX	SRP € 599,00	SRP € 619,00	SRP € 849,00



9CC - 9" precision tonearm with carbon-fibre armtube/headshell

- Conical carbon-fibre armtube avoids standing wave reflections
- Inverted bearing design with four hardened ABEC7 spec ballraces
- Solid armbase permits accurate height adjustment of armtube and VTA (vertical tracing angle)
- Single-screw fixing of armtube allows rotation for easy adjustment of needle azimuth despite fixed headshell
- Highly flexible top-grade copper internal wiring
- Linn standard mount
- Available with 5-pole standard socket, flying leads or terminal with phono sockets and earth screw

10CC - 10" precision tonearm with carbon-fibre armtube/headshell

Same as above, but 10" length

12CC - 12" precision tonearm with carbon-fibre armtube/headshell

Same as above, but 12" length

PRO-JECT CC EVOLUTION TONEARMS

	9CC EVOLUTION	10CC EVOLUTION	12CC EVOLUTION
FL	SRP € 799,00	SRP € 849,00	SRP € 899,00
5P	SRP € 829,00	SRP € 879,00	SRP € 929,00
BOX	SRP € 849,00	SRP € 899,00	SRP € 949,00



9CC EVOLUTION - 9" precision tonearm with carbon-fibre armtube/headshell

- Conical carbon-fibre armtube avoids standing wave reflections
- Inverted bearing design with four hardened ABEC7 spec ballraces
- Solid armbase
- Accurate height adjustment of armtube and VTA (vertical tracing angle)
- Single-screw fixing of armtube allows rotation for easy adjustment of needle azimuth despite fixed headshell
- Internal wiring
- Linn standard mount
- Available with 5-pole standard socket, flying leads or terminal with phono sockets and earth screw

10CC EVOLUTION - 10" precision tonearm with carbon-fibre armtube/headshell

Same as above, but 10" length

12CC EVOLUTION - 12" precision tonearm with carbon-fibre armtube/headshell

Same as above, but 12" length

PRO-JECT SIGNATURE TONEARMS

SIGNATURE 9	SIGNATURE 10	SIGNATURE 12
SRP € 1.690,00	SRP € 1.790,00	SRP € 1.990,00

NEW SIGNATURE 9 - 9" precision single-pivot tonearm

NEW SIGNATURE 10 - 10" precision single-pivot tonearm

NEW SIGNATURE 12 - 12" precision single-pivot tonearm

- Single pivot design with minimised bearing friction
- Non magnetic low resonance construction
- Fits low to high cartridge mass, including 32gr. SPU
- High rigidity aluminium headshell (12gr) with built-in fingerlift included, allows 1/2 inch cartridge mount
- High conductivity OFC headshell cables included
- Azimuth adjustment with screw on side
- Built-in 5-pin DIN connector (tonearm cable not included)
- High gloss finish
- Measure it, Alignment + Mounting distance tools included
- Delivered in exclusive wooden jewel box



PRO-JECT SIGNATURE HEADSHELLS

HEADSHELL SIG. ALU	HEADSHELL SIG. CARBON	HEADSHELL SIG. WOOD
SRP € 125,00	SRP € 99,00	SRP € 79,00

NEW HEADSHELL SIGNATURE ALU

NEW HEADSHELL SIGNATURE CARBON

NEW HEADSHELL SIGNATURE WOOD

- Ultra rigid resonance optimised construction
- Audiophile-grade wiring
- SME standard mount





5P > RCA

CONNECT IT PHONO 5Pin

Length	5P C	5P CC / 5P XLR CC	5P SI / 5P XLR SI
0,82 m	SRP € 69,00	SRP € 99,00	SRP € 329,00
1,23 m	SRP € 79,00	SRP € 109,00	SRP € 449,00
1,85 m	SRP € 99,00	SRP € 139,00	SRP € 599,00

Phono 5P > RCA C - Electrically shielded with conductors made of OFC (oxygen free copper)

Interconnect cable with earthing wire, 1x 5-pole standard tonearm socket > 2x RCA phono plugs. Option: 90° angled or 5-pol. standard tonearm socket.

Phono 5P > RCA or 5P > XLR CC - Electrically shielded with conductors made of OFC (oxygen free copper) and an additional layer of carbon fibre

Interconnect cable with earthing wire, 1x 5-pole standard tonearm socket > 2x XLR or RCA phono plugs. Option: 90° angled or 5-pol. standard tonearm socket.

Phono 5P > RCA or 5P > XLR SI - Electrically shielded with conductors made of pure silver and RCA phono plugs with locking function

Interconnect cable with earthing wire, 1x 5-pole standard tonearm socket > 2x XLR or RCA phono plugs. Option: 90° angled or 5-pol. standard tonearm socket.



5P > XLR

CONNECT IT PHONO

Length	RCA C	RCA or XLR CC	RCA or XLR SI
0,82 m	SRP € 59,00	SRP € 89,00	SRP € 299,00
1,23 m	SRP € 69,00	SRP € 99,00	SRP € 399,00
1,85 m	SRP € 89,00	SRP € 129,00	SRP € 599,00

Phono RCA > RCA C - Electrically shielded with conductors made of OFC (oxygen free copper)

Interconnect cable with earthing wire, 2x RCA phono plugs > 2x RCA phono plugs.

Phono RCA > RCA or XLR > XLR CC - Electrically shielded with conductors made of OFC (oxygen free copper) and an additional layer of carbon fibre

Interconnect cable with earthing wire, 2x XLR or RCA phono plugs > 2x XLR or RCA phono plugs.

Phono RCA SI / XLR SI - Electrically shielded with conductors made of pure silver and RCA phono plugs with locking function

Interconnect cable with earthing wire, 2x XLR or RCA phono plugs > 2x XLR or RCA phono plugs.



RCA > RCA



XLR > XLR

Phono electronics - Elemental line



RECORD BOX E

SRP € 99,00

MM Phono preamplifier with A/D converter and USB output.

- Optimal channel separation through dual-mono circuitry
- Special low-noise ICs used
- Gold plated RCA connection sockets
- Outboard power supply included
- Digitalisation of analogue signals for recording direct to disk via USB with suitable recording programs
- Automatic recognition, without additional driver, by standard PC
- Runs on Windows® and Mac OS® operating systems
- Small size allows installation close to record player
- Stylish & robust synthetic casing
- Colour options: White or black
- Dimensions: 120x32x100 (115)mm WxHxD (D with sockets)
- Weight: 250g



PHONO BOX E

SRP € 69,00

MM Phono preamplifier

- Optimal channel separation through dual-mono circuitry
- Special low-noise ICs used
- Gold plated RCA connection sockets
- Outboard power supply included
- Amplification and RIAA equalisation for MM cartridges
- Small size allows installation close to record player
- Stylish & robust synthetic casing
- Colour options: White or black
- Dimensions: 120x32x100 (115)mm WxHxD (D with sockets)
- Weight: 250g



Phono electronics - Classic line



PHONO BOX

SRP € 99,00

MM/MC Phono preamp with line output

• Preamplifier for MM or MC with switch on rear panel • Best buy classic • „Green“ DC power supply (< 1 watt standby power) • Precise RIAA equalisation • Low noise ICs • Output stage with ultra-low impedance • Gold-plated RCA sockets • Small size for installation near record player • Colour options: Silver or black • Dimensions: 103x36x103 (109)mm WxHxD (D with sockets) • Weight: 540g



PHONO BOX USB

SRP € 139,00

MM/MC Phono preamp with line & USB outputs

• Preamplifier for MM or MC with switch on rear panel • „Green“ DC power supply (< 1 watt standby power) • Precise RIAA equalisation • High quality A/D conversion with USB out to PC/Mac • Compatible with Windows®, Mac OS® • SMD technology for shortest signal paths • Gold-plated RCA sockets • Output stage with ultra-low impedance • Colour options: Silver or black • Dimensions: 103x36x103 (109)mm WxHxD (D with sockets) • Weight: 540g



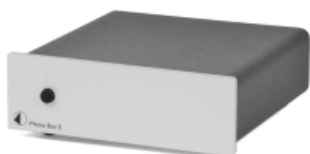
PHONO BOX USB V

SRP € 159,00

MM/MC Phono/line preamp with line & USB outputs

• Preamplifier for MM or MC with switch on rear panel • „green“ DC power supply (< 1 watt standby power) • Precise RIAA equalisation • Phono/line selector on front • Record level adjustment • High quality A/D conversion with USB out to PC/Mac • Compatible with Windows®, Mac OS® • SMD technology for shortest signal paths • Output stage with ultra-low impedance • Colour options: Silver or black • Dimensions: 103x36x103 (109)mm WxHxD (D with sockets) • Weight: 540g

Phono electronics - S line



PHONO BOX S

SRP € 149,00

„Best Buy“ MM/MC phono preamplifier

• Audiophile Performance • Dual mono configuration • Audiophile-grade amplification modules • Audiophile-grade polypropylene WIMA capacitors • Precise RIAA equalisation • Switchable Subsonic filter -12dB @ 20Hz • Switchable input impedance/capacitance • 4 adjustable gain levels • Outstanding sound quality • Metal casing protects against vibration and interference • Colour options: Silver or black • Dimensions: 103x36x104 (115)mm WxHxD (D with sockets) • Weight: 570g



A/D PHONO BOX S

SRP € 199,00

Analogue to digital converter with digital optic out (Toslink) & USB out

• MM & MC capable • Linear RIAA equalisation • Phono stage technology by Dr. Sykora • Line level input switchable • Recording level control • USB recording output to computer (Win & Mac) • Digital optic output (Toslink), works while USB is connected • Ultra low noise & low distortion levels • SMD circuitry • Metal casing protects against vibration and interference • Small size allows installation close to record player • Colour options: silver or black • Dimensions: 103x36x104 (115)mm WxHxD (D with sockets) • Weight: 580g



TUBE BOX S

SRP € 349,00

MM/MC phono preamplifier with tube output stage

• Audiophile Performance • Audiophile-grade ECC83 (12AX7) • Dual mono configuration • Audiophile-grade polypropylene WIMA capacitors • Precise RIAA equalisation • Switchable input impedance/capacitance • 3 adjustable gain levels • Subsonic filter • Outstanding sound quality • Metal casing protects against vibration and interference • Colour options: Silver or black • Dimensions: 103x74x104 (115)mm WxHxD (D with sockets) • Weight: 810g



SPEED BOX S

SRP € 129,00

Electronic motor control and speed change

- Quartz-generated high precision electronic speed regulation with microprocessor control
- Sound improvement through motor running smoothness
- Clean power decoupled from mains interference
- Allows electronic speed change 33 & 45 rpm
- 78 rpm possible with optional accessory pulley
- Suitable for all turntables with 16 volt AC motor, up to 3 watt max. power consumption
- Small size allows installation close to record player
- Outboard power supply included
- Metal casing protects against vibration and interference
- Colour options: Silver or black
- Dimensions: 103x36x104 (115)mm WxHxD (D with sockets)
- Weight: 580g

Phono electronics - DS line



PHONO BOX DS

SRP € 249,00

Phono preamplifier

- MM & MC capable
- Linear RIAA equalisation
- Ultimate circuit technology from Dr. Sykora, simplified version of Phono Box DS+ without display & relais switching
- Ultra low noise & low distortion levels
- SMD circuitry
- Subsonic filter (switchable on rear panel)
- Substantial setup options
- Comfortable switching via buttons on front
- Metal casing protects against vibration and interference
- Colour options: Silver or black
- Dimensions: 103x72x144 (156)mm WxHxD (D with sockets)
- Weight: 1100g



PHONO BOX DS +

SRP € 399,00

Phono preamplifier

- MM & MC capable
- Linear RIAA equalisation
- Ultimate circuit technology from Dr. Sykora
- Ultra low noise & low distortion levels
- Double mono SMD circuitry
- Low loss polypropylen capacitors
- Substantial setup options
- Classy & elegant display shows setup parameters
- Relay switching
- Metal casing protects against vibration and interference
- Colour options: Silver or black
- Dimensions: 103x72x144 (156)mm WxHxD (D with sockets)
- Weight: 1025g



TUBE BOX DS

SRP € 499,00

MM/MC tube phono preamplifier

- MM & MC support
- Precise RIAA equalisation
- Ultra low noise circuitry
- 12AX7 tube output stage with pre-mounted cool dampers
- Input impedance adjustment for low output MC on front
- Input capacitance adjustment in 4 steps (MM & Hi-output MC)
- Switchable subsonic filter
- Gold plated RCA sockets
- Front-sided On/Off switch
- Metal casing protects against vibration and interference
- Colour options: Silver or black
- Dimensions: 103x72x144 (156)mm WxHxD (D with sockets)
- Weight: 1100g



SPEED BOX DS

SRP € 399,00

Quartz controlled speed control for turntable for assuring ultimate speed consistency

- Speed change between 33 and 45rpm
- Speed can be altered in graduated steps on either setting
- Voltage regulation function
- Generated sinus wave voltage decoupled from mains interference
- Outputs: 16V AV and 230V AV (available also in 120V / 60 Hz version)
- Only for AC turntables
- Metal casing protects against vibration and interference
- Colour options: Silver or black
- Dimensions: 103x72x144mm WxHxD
- Weight: 1360g



SPEED BOX DS STROBO

SRP € 299,00

NEW Electronic motor control and speed change with Strobe it

- Quartz-generated high precision electronic speed regulation with microprocessor control
- Sound improvement through motor running smoothness
- Clean power decoupled from mains interference
- Allows electronic speed change 33 & 45 rpm
- 78 rpm possible with optional accessory pulley
- Suitable for all turntables with 16 volt AC motor (110V / 230V motors), up to 3 watt max. power consumption
- Not for Pro-Ject turntables with DC power supply
- Small size allows installation close to record player
- Outboard power supply included
- Metal casing protects against vibration and interference
- Available as EU, UK or US version
- Colour options: silver or black
- Dimensions: 103x72x144mm WxHxD
- Weight: 1340g

Phono electronics - RS line



PHONO BOX RS

SRP € 799,00

Highend phono preamplifier

• MM & MC capable • Fully balanced double mono design • Fully passive RIAA & DECCA equalisation • Unique continuously variable input impedance loading, matches every cartridge (adjustment even while playing) • RCA & XLR In & Out • Superior low noise / low distortion • Classy & elegant dip switches • Metal casing protects against vibration and interference • Colour options: Silver or black • Dimensions: 206x72x200 (210)mm WxHxD (D with sockets) • Weight: 2000g
Optional Upgrade: Linear power supply Power Box RS Phono for further improved sound quality



POWER BOX RS PHONO

SRP € 499,00

Linear power supply for Phono Box RS with battery power output

• High filtration capacity • Precise voltage regulation • Surge protection • Low noise components for ultimate sound performance • Power Box RS Phono offers virtual battery power to Phono RS • Metal casing protects against vibration and interference • Colour options: silver or black • Dimensions: 206x72x195 mm WxHxD • Weight: 2030g

Phono power solution - S, DS, RS line

PRELIMINARY



POWER BOX MAIA DS

(Release date on request) SRP € 499,00

NEW Linear power supply for MaiA DS and other products of DS-Line, S-Line and turntable

• DC blocking circuitry in primary winding (no mechanical noise generated by transformer, cleaner energy, better sound) • 12V trigger out • **15V / 1A turntable power output (real ground for turntable, eliminating possibility of hum)** • **Allows simultaneous operation of turntable; Phono Box pre-amplifier plus other products** (for further details see www.project-audio.com) • Colour options: silver or black • Dimensions: 206x72x194mm WxHxD

PRELIMINARY



POWER BOX DS SOURCES

(Release date on request) SRP € 399,00

NEW Universal linear power supply for 6 components of DS-Line, S-Line and turntable

• DC blocking circuitry in primary winding (no mechanical noise generated by transformer, cleaner energy, better sound) • 12V trigger out • **15V / 1A turntable power output (real ground for turntable, eliminating possibility of hum)** • **Allows simultaneous operation of turntable; Phono Box pre-amplifier plus other products** (for further details see www.project-audio.com) • Colour options: silver or black • Dimensions: 206x72x194mm WxHxD

PRELIMINARY



POWER BOX MAIA

(Release date on request) SRP € 399,00

NEW Linear power supply for MaiA, MaiA CD and turntable

• DC blocking circuitry in primary winding (no mechanical noise generated by transformer, cleaner energy, better sound) • Toroidal transformers • **15V / 1A turntable power output (real ground for turntable, eliminating possibility of hum)** • **Allows simultaneous operation of turntable, Phono Box pre-amplifier plus other products** (for further details see www.project-audio.com) • Colour options: silver or black • Dimensions: 206x72x194mm WxHxD



POWER BOX RS UNI 4-way

SRP € 599,00

Universal linear power supply for 4 components of RS-Line including turntable

• High filtration capacity • Precise voltage regulation • Surge protection • **15V / 1A turntable power output (real ground for turntable, eliminating possibility of hum) using adapter cable** Connect it **Power** • Allows simultaneous operation of turntable, Phono Box RS plus other products (for further details see www.project-audio.com) • Colour options: silver or black • Dimensions: 201x72x195mm WxHxD (D with sockets) • Weight: 4800g



Connect it Power RS MiniXLR-Phono DC15V 2,1

Available lengths: 0,205m - 1,85m

from SRP € 49,00 to € 60,00

NEW Cable to connect Power Box with Pro-Ject turntables (with 15V DC power supply)

Mini XLR (20V) connector > 2,1mm (15V) connector



HUM BLOCK IT

SRP € 29,00

NEW Physical earth connection cable

Provides connection to mains physical ground, that switching mode power supplies are not able to provide • Avoids electric potential difference between turntable, phono preamps and amplifiers • Improvement of audio performance through hum avoidance and overall noise reduction • Available with European Schuko plugs • UK/US versions on request

Accessories - 78 Rpm



78RPM PULLEY SET 50 OR 60HZ

SRP € 17,00

Pulley + Belt for gramophone playback

Optional pulley set converts some Pro-Ject turntables for playback of gramophone records. Please note that a special cartridge stylus may be required



PULLEY SB

SRP € 9,00

Pulley 33 & 45 & 78rpm in combination with Speed Box

78rpm possible by replacing original drive pulley for „Pulley SB“ and addition of Speed Box S (suitable for turntables with 16V AC motors) or Speed Box SE / DS (suitable for turntables with 230V and 16V AC motors) • Not usable with all turntables, please consult your Pro-Ject Audio Systems partner



OM78 stylus

SRP € 60,00

2M78 stylus

SRP € 80,00

Recommended styli for gramophone playback

Optional for OM and 2M cartridges • Only for use with 78rpm gramophone records • Not usable for standard LPs and singles

Accessories - Adjustment

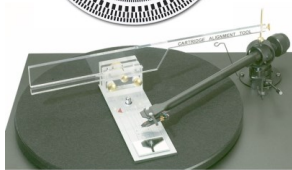


STROBE IT

SRP € 29,00

Control of turntable speed

• Speed control for 33/45/78 rpm • 50/60 Hz • Cartridge alignment scheme included



ALIGN IT

SRP € 119,00

Cartridge alignment tool

• Tool for cartridge alignment and adjustment • Special slip-proof tool for defining the turning centre of Pro-Ject Audio Systems' tonearms • Adaptable to accommodate differing tonearm lengths • Suitable for other manufacturers' tonearms • Suitable for tonearms between 8" (203mm) and 12" (305mm) effective length



ADJUST IT

SRP € 25,00

Tonearm bearing adjustment tool

• Suitable for all Pro-Ject Audio Systems' tonearms • Allows fine adjustment of bearings, if misadjusted • Caution: For qualified personnel only • Includes 2 inserts for different bearings • Full metal (aluminium & brass)



LEVEL IT

SRP € 25,00

Spirit level for optimum positioning of a turntable

- Making sure your turntable is level because this is critical for set-up and playback



MEASURE IT II

SRP € 99,00

Electronic stylus balance

- 4 digit LCD-display with backlight • Capacity 0 - 5g • Variance $\pm 0,002g$ • Auto calibration function • Auto off after 120 seconds • Replacement batteries supplied

Accessories - Sound tuning



LUBE IT

SRP € 17,90

High-tech lubricant

- Constant velocity spindle oil • 5ml • Also available: special grease for inverted bearings



ACRYL IT

SRP € 109,00

Turntable platter

- Suitable for Debut and Xpression turntables • Substitutes metal platter • Inert material avoids resonances • Dent for label implemented • Ideal for use with Clamp it • Audiophile sound tuning • Optical upvaluation



ACRYL IT E

SRP € 99,00

Turntable platter

- Suitable for Elementa and Essential turntables • Substitutes metal platter • Inert material avoids resonances • Dent for label implemented • Ideal for use with Clamp it • Audiophile sound tuning • Optical upvaluation

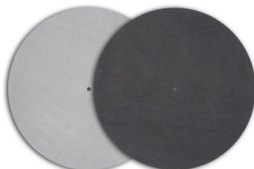


CORK IT

SRP € 19,00

Sound tuning with turntable mats

- Alternative platter mats with special sound characteristics • Substitutes felt mats • Damping of resonances from metal turntable platters • Less noise • Avoids static load • Suitable for all turntables • Perfect combined with Clamp it



LEATHER IT

SRP € 49,00

Sound tuning with turntable mats

- Alternative platter mats with special sound characteristics • Substitutes felt mats • Damping of resonances from metal turntable platters • Less noise • Avoids static load • Suitable for all turntables • Perfect combined with Clamp it

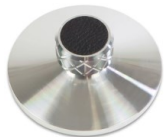


FELT MAT

SRP € 9,90

Felt mat for Debut turntables

- Individual colours give your turntable a very special appearance • Diameter 280 or 300mm • Different colours: Black, dark-grey, light-grey, dark-red, red, orange, yellow, light-green, green, blue



CLAMP IT

SRP € 79,00

Record clamp

- Sound improvement for all turntables • Reduces unwanted resonances while playback • Fast and easy mounting • Fine-adjustment of tightening force • Full metal accessory with leather coating • Diamond cut finish



RECORD PUCK

SRP € 69,00

Heavy weight record clamp

- Record clamp for fixing of record on the turntable



RECORD PUCK BRASS

SRP € 69,00

Heavy weight record clamp

- Record clamp in brass gold for fixing of record on the turntable

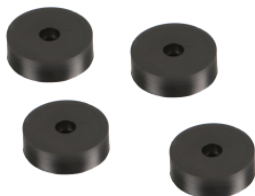


ABSORB IT

4 pcs SRP € 159,00

Highend damping feet

• Special absorber feet made from hightech synthetic material enclosed by metal ring • Prevent transmission of unwanted mechanical vibration • Especially designed for CD players and turntables



DAMP IT

1 pc SRP € 7,99

Highend damping feet

4 pcs SRP € 29,90

• Special absorber feet made from hightech TPE material • Prevent transmission of unwanted mechanical vibration • Especially for CD and other disc players, tube amplifiers, speakers and turntables
• Single or set of 4



GROUND IT DELUXE

GROUND IT DELUXE 1 SRP € 299,00

GROUND IT DELUXE 2 SRP € 299,00

GROUND IT DELUXE 3 SRP € 499,00

Equipment bases

• Resonance free placement for turntables & Hifi • Heavy weight base filled with granular damping • 2 models with adjustable spikes (3 or 4 may be fitted) • 1 model with height adjustable magnetic feet • Dark grey piano lacquer finish • Matches charcoal finish of Pro-Ject turntables • Ground it deluxe 1: Dimension: 500 x 65 (45) x 400mm incl spikes (without spikes) Weight: 11,6 kg • Ground it deluxe 2: Dimension: 435 x 65 (45) x 340mm incl. spikes (without spikes) Weight: 8,5 kg • Ground it deluxe 3: Dimension: 500 x 65 (45) x 400mm incl. feet (without feet) Weight: 13,5 kg



WALLMOUNT IT 1

SRP € 129,00

Wall mount equipment rack

• Welded steel frame construction, matt black finish • Veneered wooden board, black finish • Four height-adjustable spikes to level the board • Surface area (W x D): 460 x 355mm • Overall dimensions (W x H x D): 460 x 90 x 415mm



WALLMOUNT IT 2

SRP € 159,00

Wall mount equipment rack

• Welded steel frame construction, matt black finish • Veneered wooden board, black finish • Four height-adjustable spikes to level the board • Surface area (W x D): 460 x 355mm • Overall dimensions (W x H x D): 460 x 260 x 455mm



WALLMOUNT IT 3

SRP € 299,00

Wall mount equipment rack

• Screwed steel construction, matt black finish • Lacquered MDF board, matt black • Three height-adjustable spikes to level the board • Surface area (W x D): 520 x 450mm • Overall dimensions (W x H x D): 635 x 290 x 455mm



WALLMOUNT IT 5

SRP € 199,00

Wall mount equipment rack

• Resonance-free wall mount for turntables & Hifi • Playback of records free from any influence by impact noise and vibrating floors • WMI wall mounts use rigid steel frame construction • Height-adjustable spikes to level the board • Maximum load of 30kg • Can also be mounted on thin or american type plywood walls (Firmness depends on wall and mounting accessories), because massloaded internal damping absorbs resonances • Wood finish: either black or walnut • Surface area (W x D): 460 x 400mm • Overall dimensions (W x H x D): 460 x 60 x 425mm

Accessories - Miscellaneous



Lifestyle combination of
3 pcs Rack it Cube with Rack it Shelves

RACK IT

RACK IT CUBE (MATT)	(1pc.) SRP € 109,00
RACK IT CUBE (HIGH GLOSS)	(1pc.) SRP € 250,00
RACK IT SHELF (MATT)	(1pc.) SRP € 25,00
RACK IT SHELF (HIGH GLOSS)	(1pc.) SRP € 39,00

NEW Universal storage system for Box Design components and music media

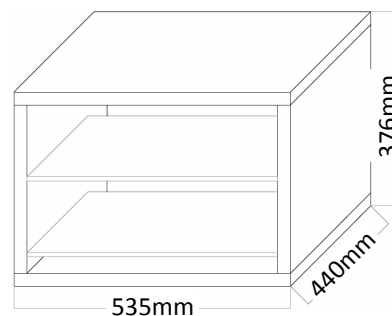
- Lifestyle rack system • Stackable platform for turntables, Box Design components etc • Easy to mount
- 1 Rack it Cube holds approximately 150 LPs • Basic Cube can be equipped with optional shelves
- Shelves include mounting tools • Colour options: white, white HG, red HG, black, black HG, champagne HG, green HG, grey HG, yellow HG
- Dimensions Rack it Cube 535 x 376 x 440 mm (WxHxD)
- Dimensions Rack it Shelves 485 x 7 x 380 mm (WxHxD)



1 piece Rack it Cube to store Vinyl records



Rack it Cube with Rack it Shelves to store MaiA, MaiA CD (including power supplies) and CDs



PLAY & DISPLAY

(1 pc.) SRP € 49,00
(3 pc.) SRP € 139,00

12" Vinyl display frame

- Stylish hifi accessory for vinyl lovers • First ever vinyl display frame that can have its contents changed without being removed from the wall
- Any space can be personalised in seconds • British Design Classic • Internationally patented • Beautifully packaged for instant gifting • UV resistant
- Renewed enjoyment to record collections • Customer friendly priced single and triple packs

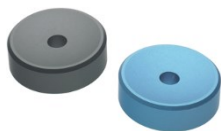


COVER IT

COVER IT 1	SRP € 249,00
COVER IT 2.1	SRP € 199,00
COVER IT RPM 1/5	SRP € 79,00
COVER IT RPM 9	SRP € 99,00

Universal dust cover

- Crystal clear acrylic cover for turntables • Protects turntable and needle • 2 models: Cover it 1 & Cover it 2.1 • Cover it 1 suits Ground it deluxe 1 • Cover it 2.1 suits Ground it deluxe 2 & 3

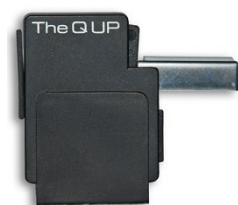


ADAPT IT

SRP € 19,00

Single puck

- Adaptor for use with 7-inch single records • Locates record centrally on turntable • No plastic - precision CNC-machined • Non-magnetic aluminium • Suitable for all brands and types of record players
- 2 colour options: Black or blue



Q UP

SRP € 59,00

Automatic tonearm lifter for manual turntables

- Lifts tonearm, when it moves to the end of a record • Extends stylus life • Suits nearly all tonearms and manual turntables
- Includes three stackable platforms for turntables with thick platters • Adjustable trigger sensitivity • No AC or battery power needed • Easy to mount, no additional tools necessary



BRUSH IT

SRP € 15,00

Carbon fibre brush for record cleaning

• Anti static record cleaner • Conductive carbon fibers • Eliminates static charges • Removes finest dust particles



CLEAN IT

SRP € 10,00

Carbon fibre stylus cleaning brush

• Smooth cleaner for diamant stylus • Conductive carbon fibers • Eliminates static charges • Removes finest dust particles



SPIN-CLEAN®

SPIN-CLEAN RECORD WASHER SYSTEM MKII

SRP € 99,00

SPIN-CLEAN RECORD WASHER MKII PACKAGE

SRP € 165,00

SPIN-CLEAN RECORD WASHER MKII PACKAGE - LIMITED EDITION

SRP € 199,00

Record washer

Clean your valuable vinyls gentle, but efficient! Clean records sound much better and help to protect the stylus from dust. Spin Clean clears manually and is suitable for all kinds of records: LP's, 45's, 78's Spin Clean Record washer system includes all necessary parts: 4 oz. (118ml) washer fluid, 2 brushes and dryer cloths. Of course all components of Spin-Clean are available as accessory!



SPIN-CLEAN® WASHER FLUID

SPIN-CLEAN WASHER FLUID 8 OZ (237 ML)

SRP € 17,00

SPIN-CLEAN WASHER FLUID 16 OZ (473 ML)

SRP € 25,00

SPIN-CLEAN WASHER FLUID 32 OZ (946 ML)

SRP € 37,00



SPIN-CLEAN® BRUSHES (ONE PAIR)

SRP € 30,00

Replacement brushes



SPIN-CLEAN® ROLLERS (ONE PAIR)

SRP € 25,00

Replacement rollers



SPIN-CLEAN® DRYING CLOTHS (5-PACK)

SRP € 20,00

Washable dry cloths



WASHING MACHINE

SRP € (on request)

NEW Automatic vinyl cleaning system

• Smooth and efficient cleaner for vinyl records • Cleaning side by side • Quick and gentle cleaning preserves value of your record collection • Removes finest dust and grease



PALISANDER MATT



WALNUT MATT



EUCALYPTUS MATT